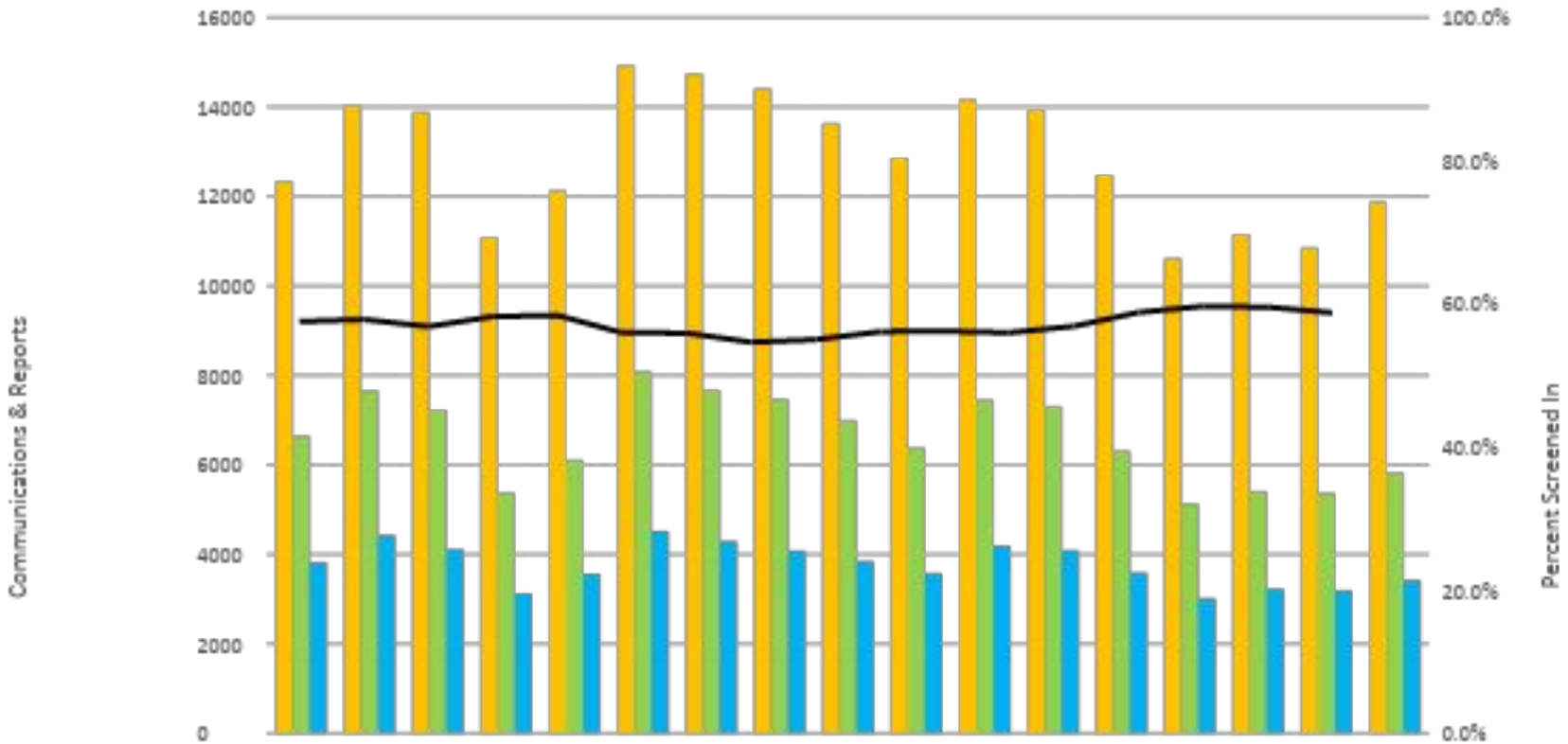


Department of Child Safety

Data charts as of week beginning 8.31.2020



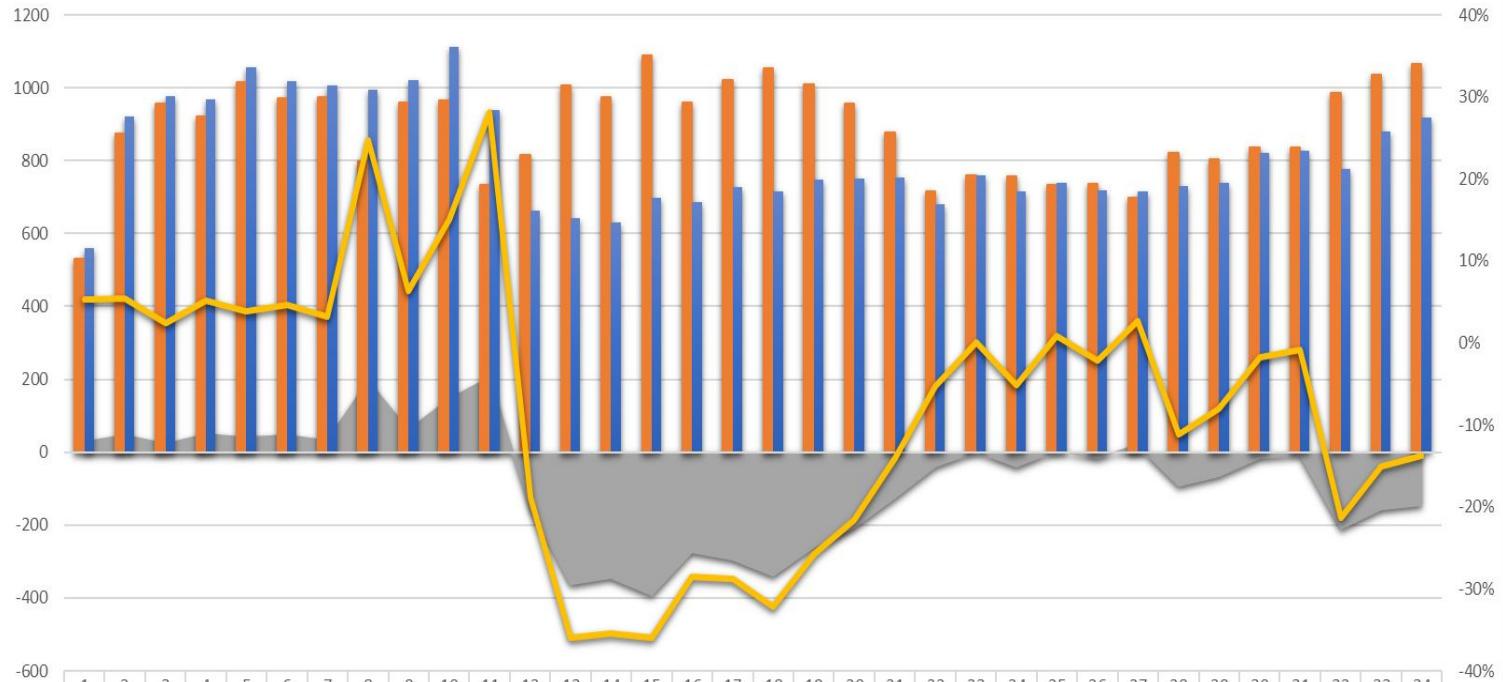
Communications & Reports to the Hotline



NOTE: Communications, Hotline Communications, and Reports include calls/reports that are no jurisdiction reports. Screen In % shows reports as a percentage of total Hotline Communications.
 Data Source: DCS Tableau Dashboard, Communications Received by Weekday and Hour Reports, 8.29.2020

Weekly Reporting – All Sources

Weekly Reports - All Source Types (2019 vs 2020)

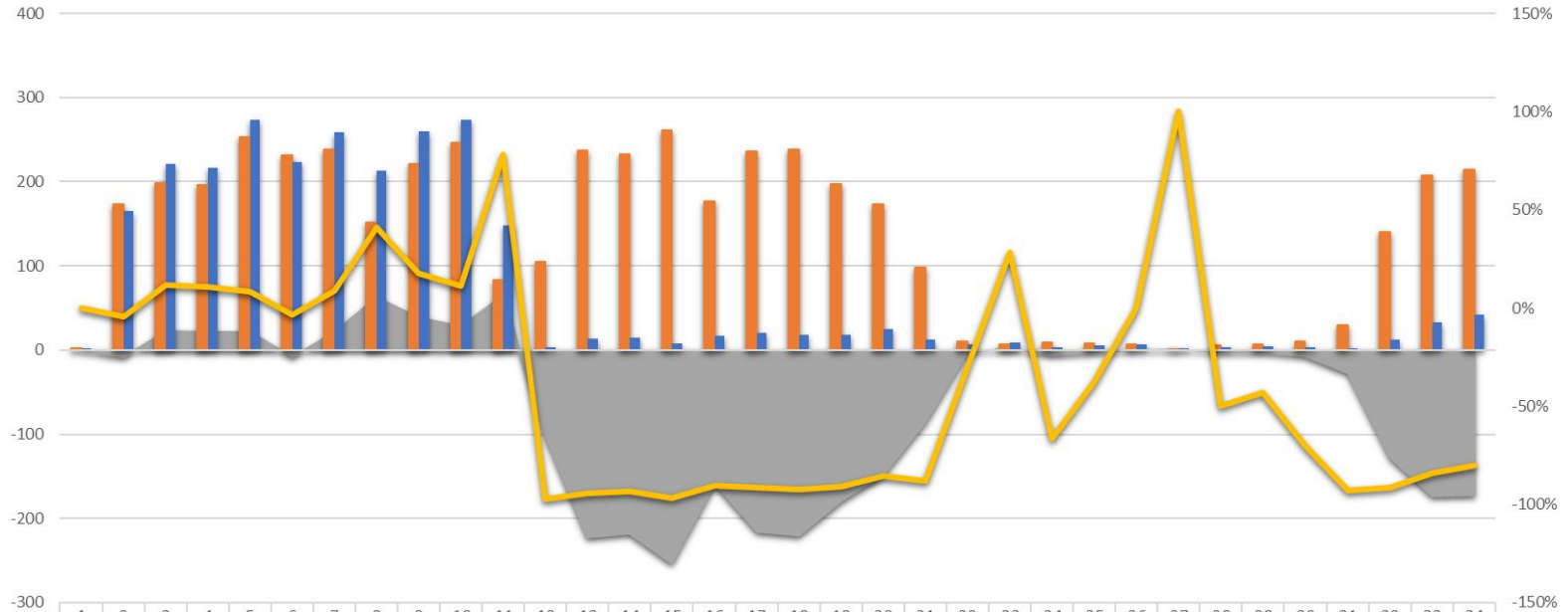


	1	2	3	4	5	6	7	8	9	10	11	12	13	14	15	16	17	18	19	20	21	22	23	24	25	26	27	28	29	30	31	32	33	34
All Source Var.	28	47	23	48	39	45	31	197	61	146	206	-154	-362	-346	-391	-274	-294	-339	-260	-207	-123	-38	1	-39	6	-16	19	-92	-65	-15	-7	-210	-156	-146
2019-All Sources	532	873	955	920	1016	972	974	797	960	965	733	816	1005	975	1089	959	1022	1054	1009	957	876	717	759	756	733	735	698	821	804	835	835	986	1035	1065
2020-All Sources	560	920	978	968	1,055	1,017	1,005	994	1,021	1,111	939	662	643	629	698	685	728	715	749	750	753	679	760	717	739	719	717	729	739	820	828	776	879	919
% All Source Var.	5%	5%	2%	5%	4%	5%	3%	25%	6%	15%	28%	-19%	-36%	-35%	-36%	-29%	-29%	-32%	-26%	-22%	-14%	-5%	0%	-5%	1%	-2%	3%	-11%	-8%	-2%	-1%	-21%	-15%	-14%



Weekly Reporting - Educators

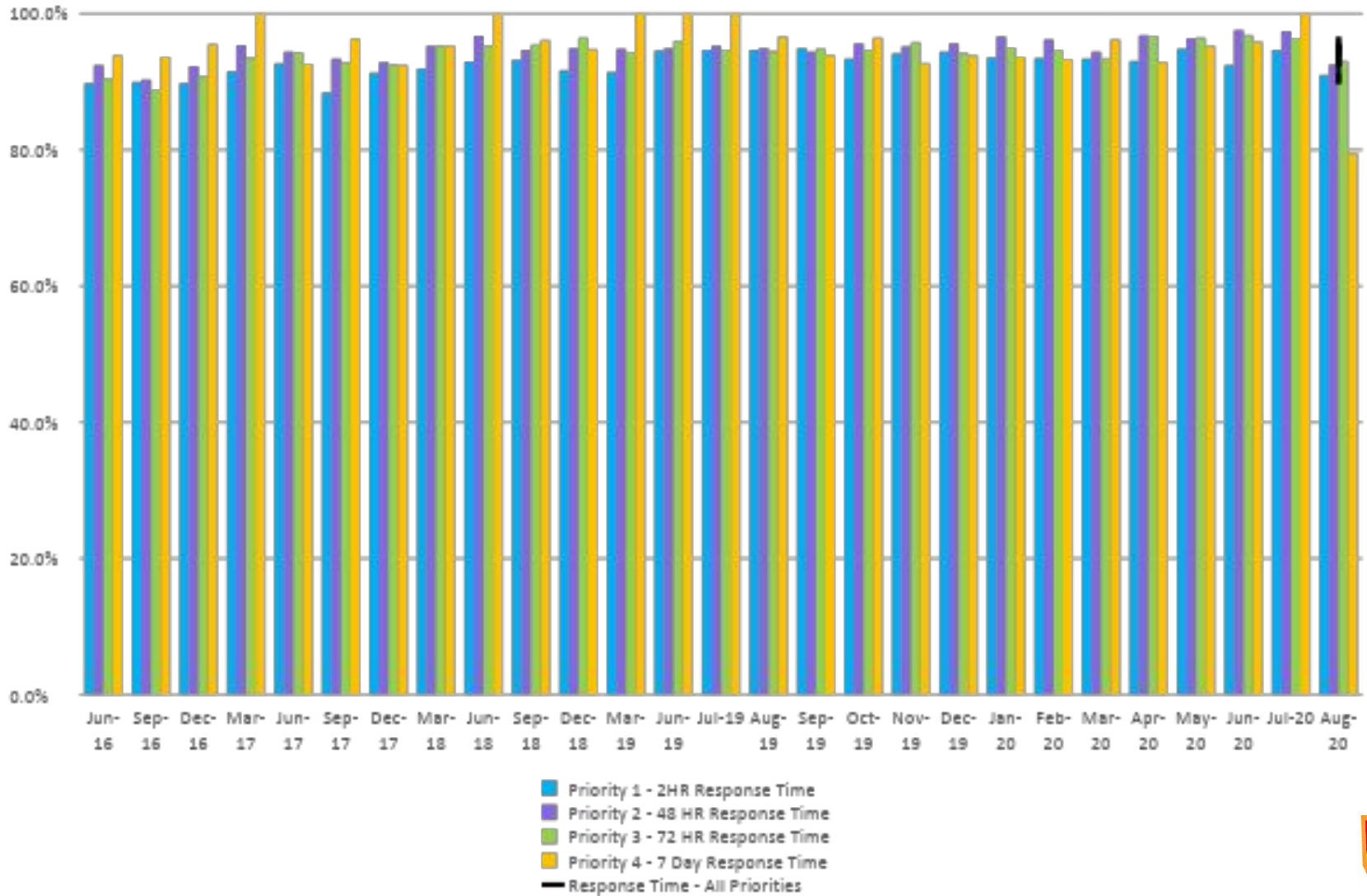
Weekly Reports - School Setting Source Type (2019 vs. 2020)



■ School Var.	0	-8	23	21	21	-8	21	62	39	28	65	-102	-223	-218	-253	-159	-216	-220	-179	-148	-86	-3	2	-6	-3	0	1	-3	-3	-7	-27	-128	-174	-172
■ 2019-School	2	173	198	196	253	231	238	151	221	246	83	105	237	233	261	176	236	238	197	173	98	10	7	9	8	7	1	6	7	10	29	140	207	214
■ 2020-School	2	165	221	217	274	223	259	213	260	274	148	3	14	15	8	17	20	18	18	25	12	7	9	3	5	7	2	3	4	3	2	12	33	42
— % School Var.	0%	-5%	12%	11%	8%	-3%	9%	41%	18%	11%	78%	-97%	-94%	-94%	-97%	-90%	-92%	-92%	-91%	-86%	-88%	-30%	29%	-67%	-38%	0%	100%	-50%	-43%	-70%	-93%	-91%	-84%	-80%



Response Timeliness

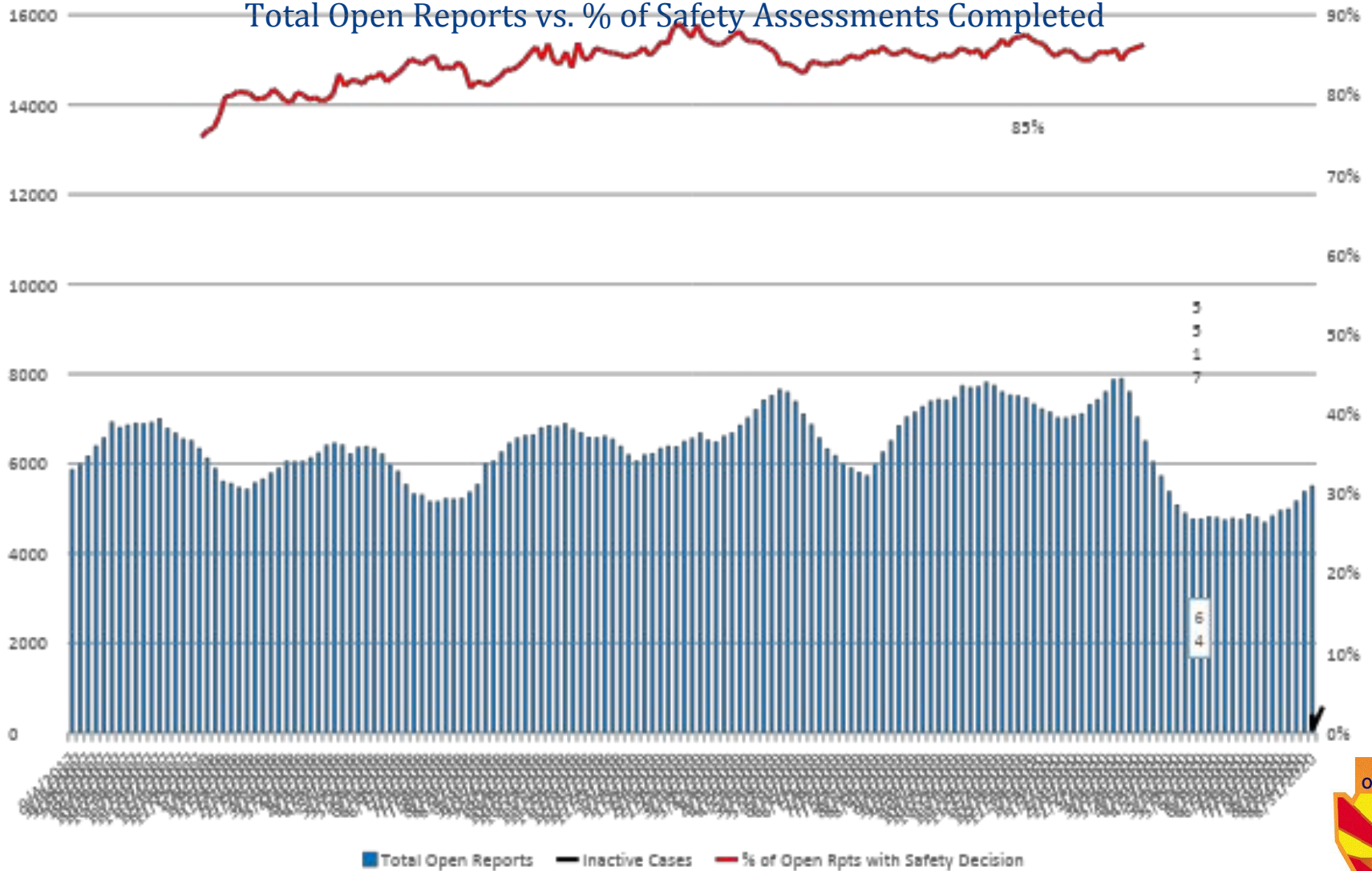


NOTE: August 2020 data is preliminary.

Data Source: DCS Tableau Dashboard, Report Response Timeliness, 8.29.2020

Safety Assessment Completion & Inactive Cases

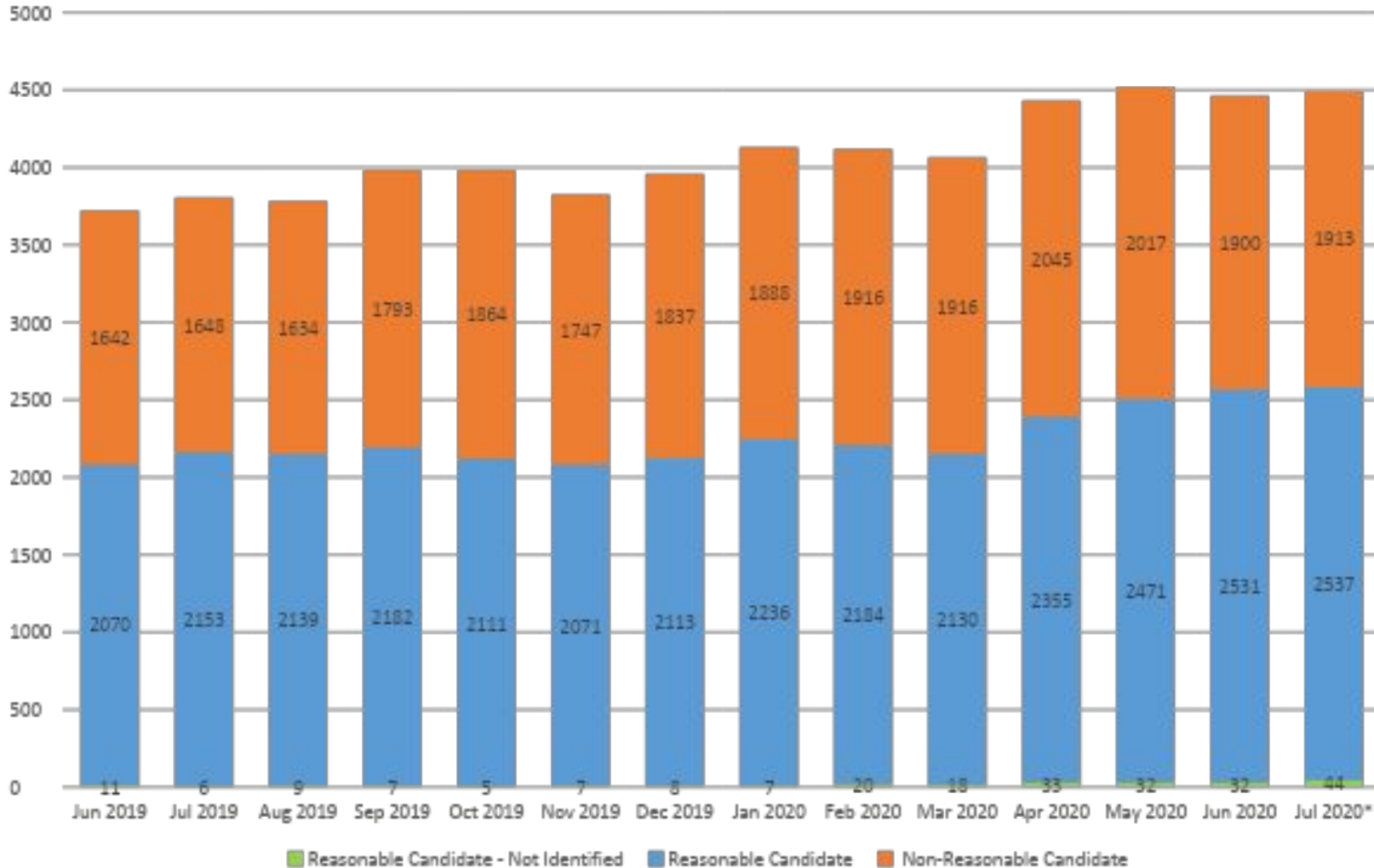
Total Open Reports vs. % of Safety Assessments Completed



Data Sources: 1. for Total Open Reports and Safety Assessment Completion - DCS Tableau Dashboard, Overdue Reports, 8.31.2020
2. For Inactive Cases - Weekly DCS Inactives Report, 8.29.2020

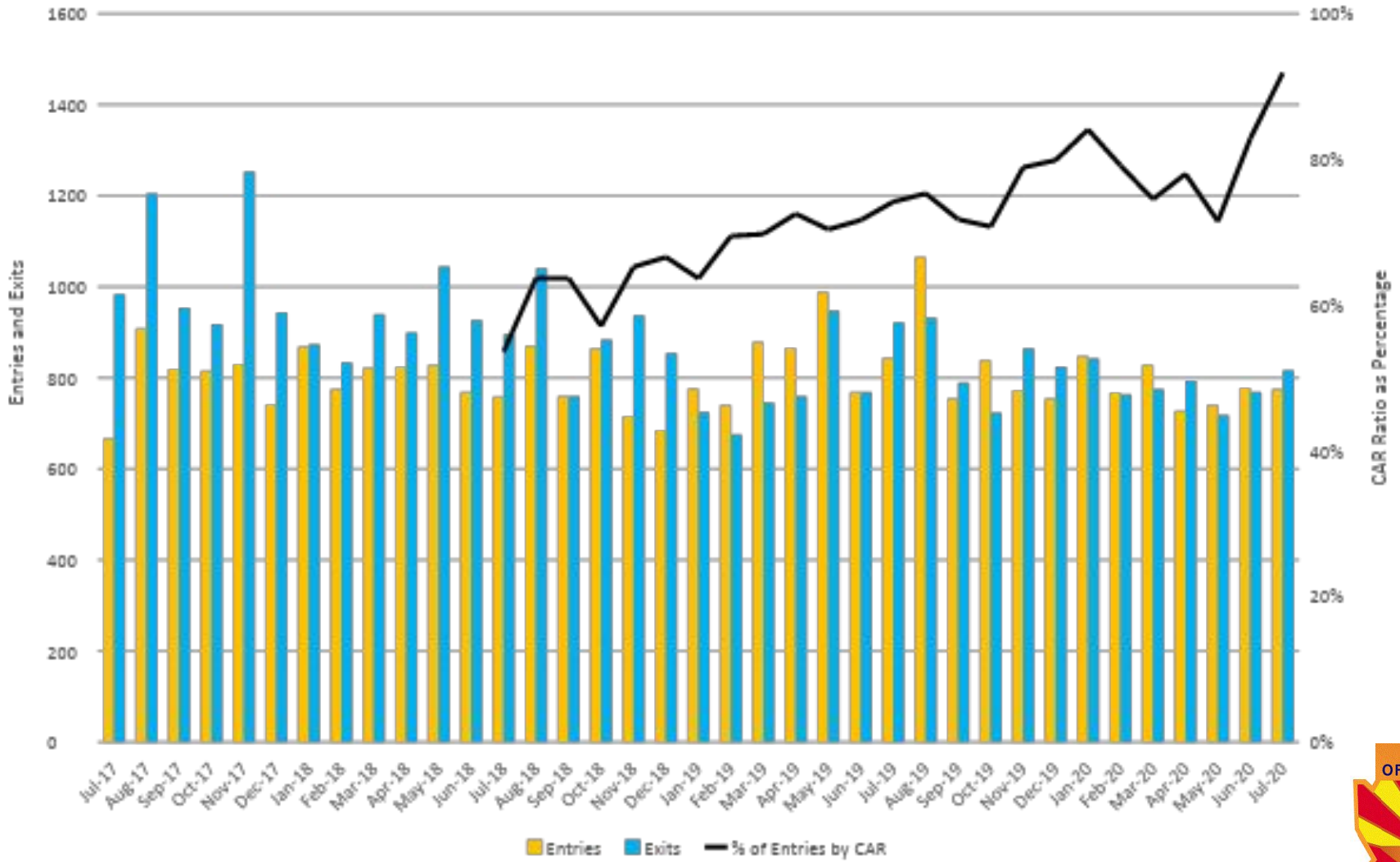
Children Receiving In Home Services

Children with Case Plan Goal – Remain with Family



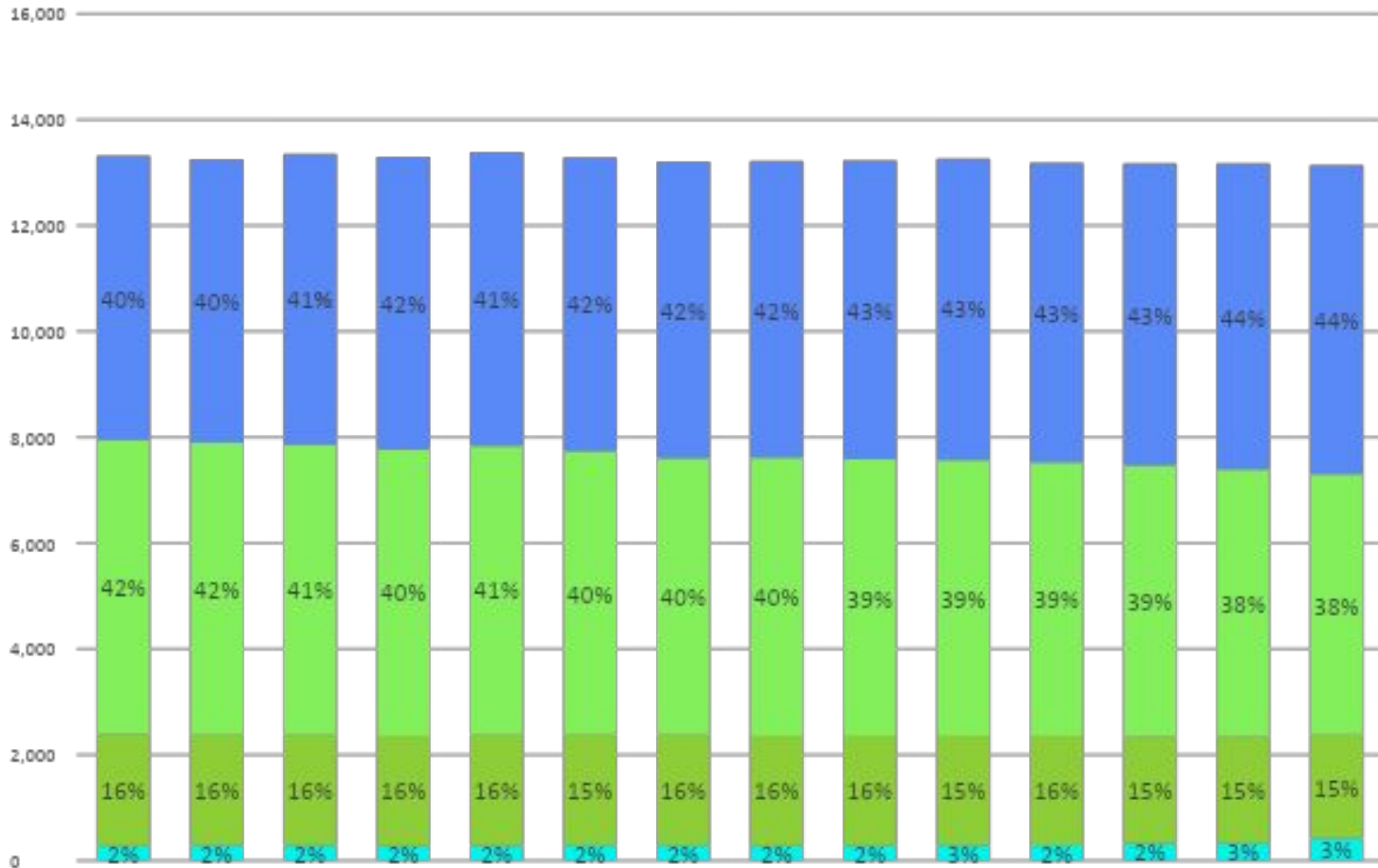
NOTE: July 2020 data is preliminary
Data Source: DCS Monthly In-Home Care Report, 8.20.2020

Ratio of Approved CAR Petitions vs. Child Entries



NOTE: July 2020 data is preliminary
 Data Source: CAR data received from Juvenile Courts, 8.14.2020; Entries and Exits Dashboard, 8.31.2020

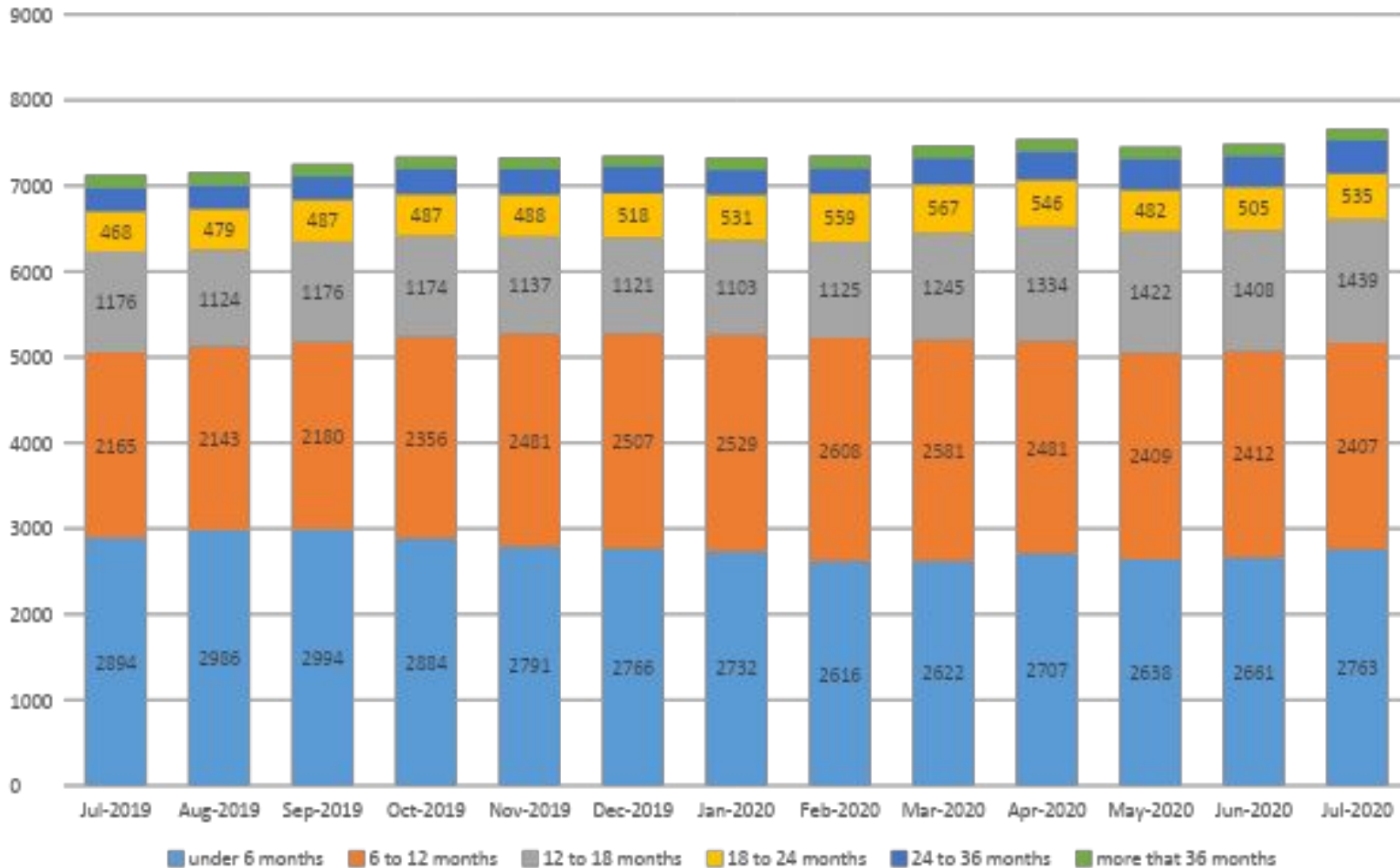
Children in Out-of-Home Care (0-17 years old)



NOTE: July 2020 data is preliminary
Data Source: DCS Monthly Out-of-Home Care Report, 8.20.2020

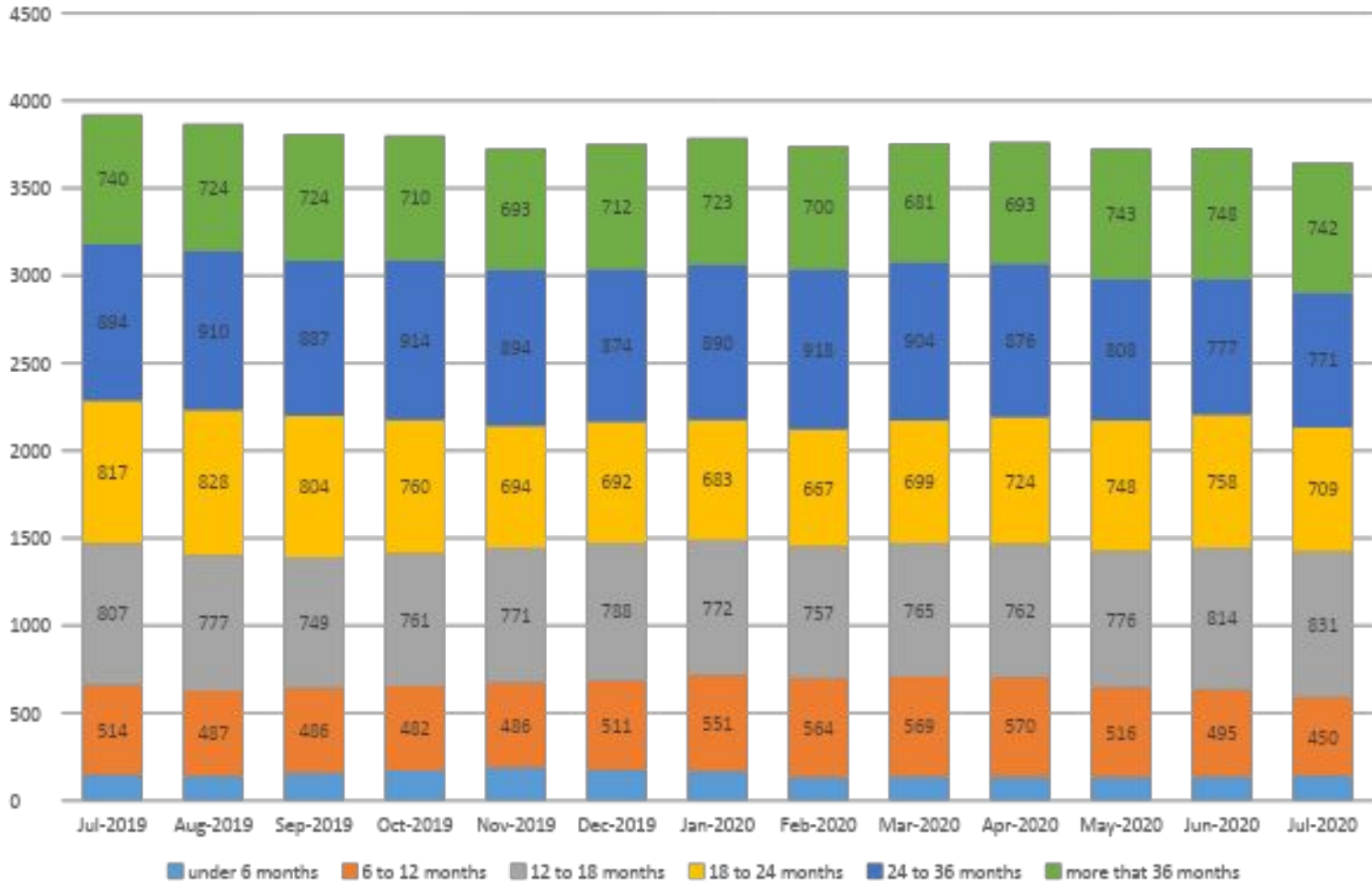


Removed Children with Permanency Goal of Reunification by Length of Time in Care



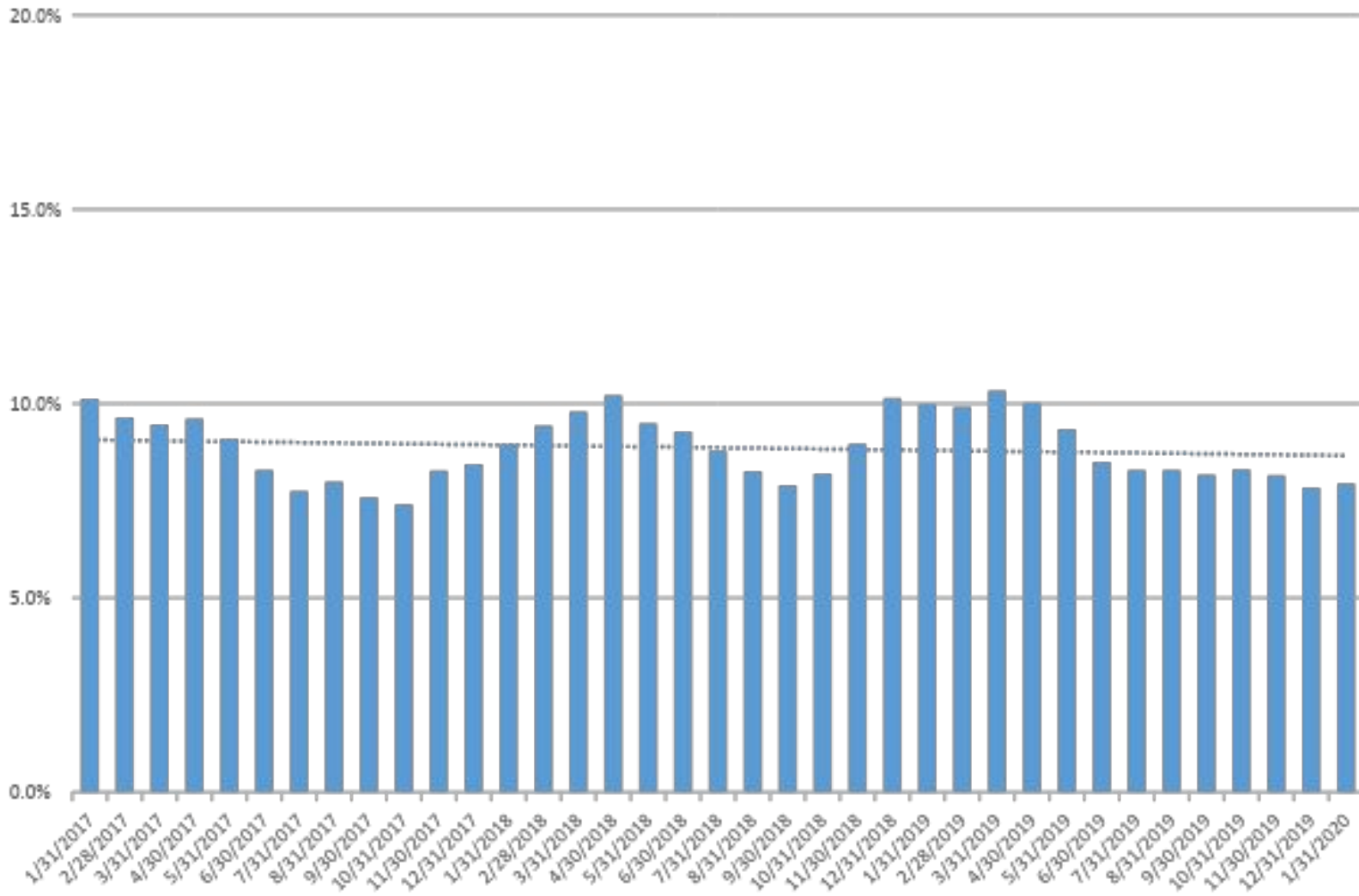
NOTE: July 2020 data is preliminary
 Data Source: Einstein, 8.12.2020

Removed Children with Permanency Goal of Adoption by Length of Time in Care



NOTE: July 2020 data is preliminary
 Data Source: Einstein, 8.12.2020

Re-entry within 6 months of Exiting Care

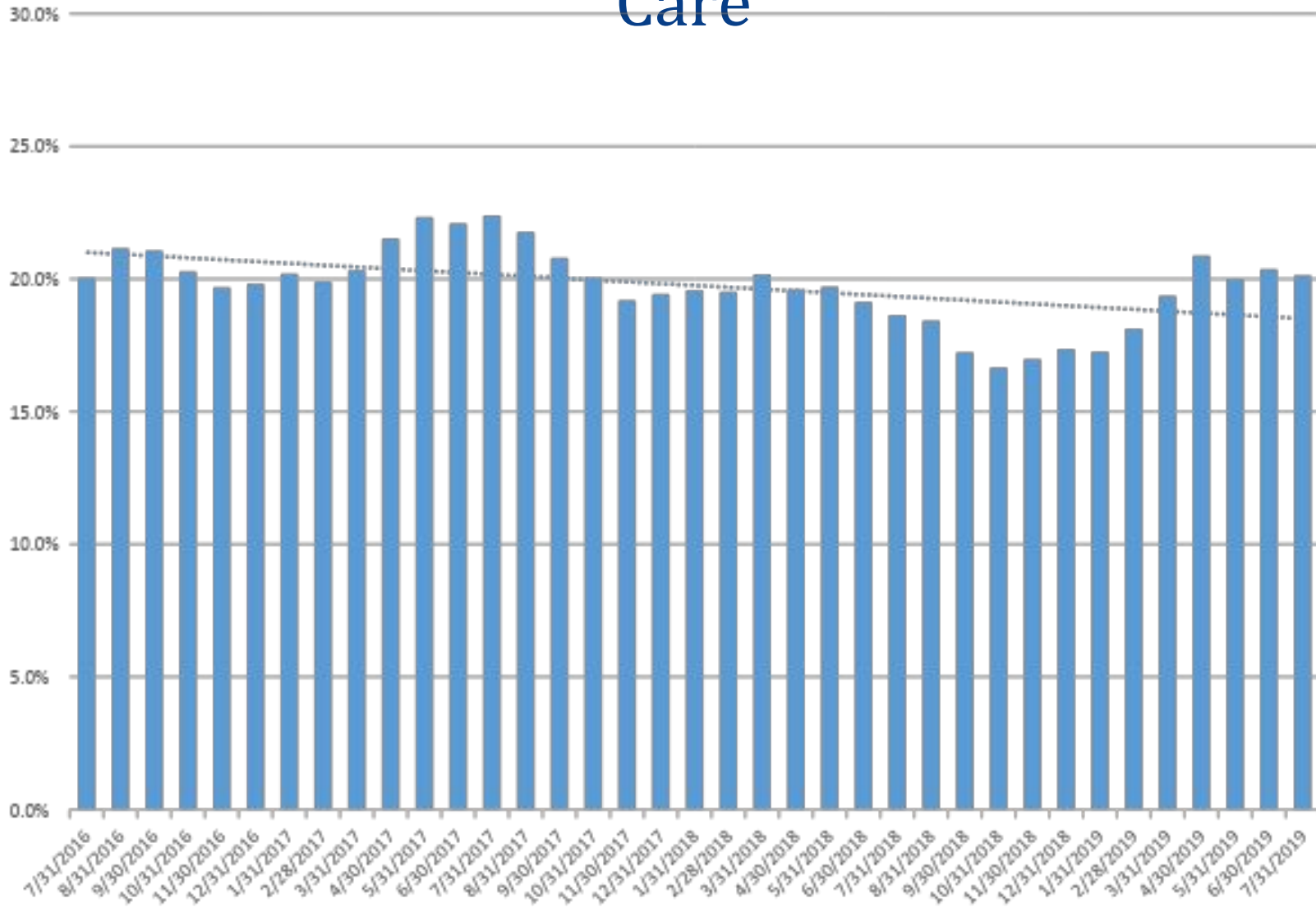


NOTE: Rolling 6 month average of children who exited for reunification and guardianship

Data Source: DCS Einstein, 8.12.2020

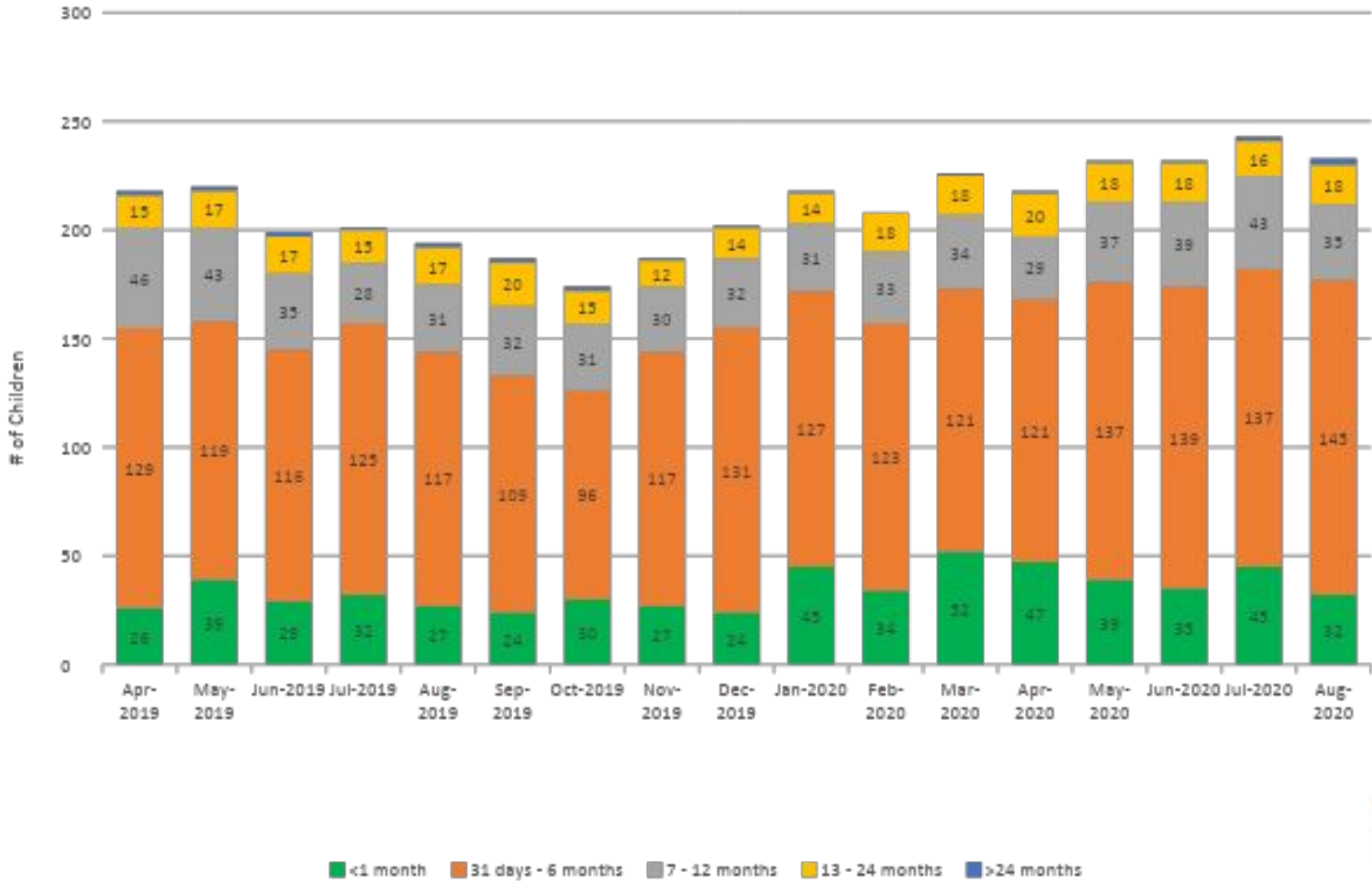


Re-report within 12 months of Exiting Care



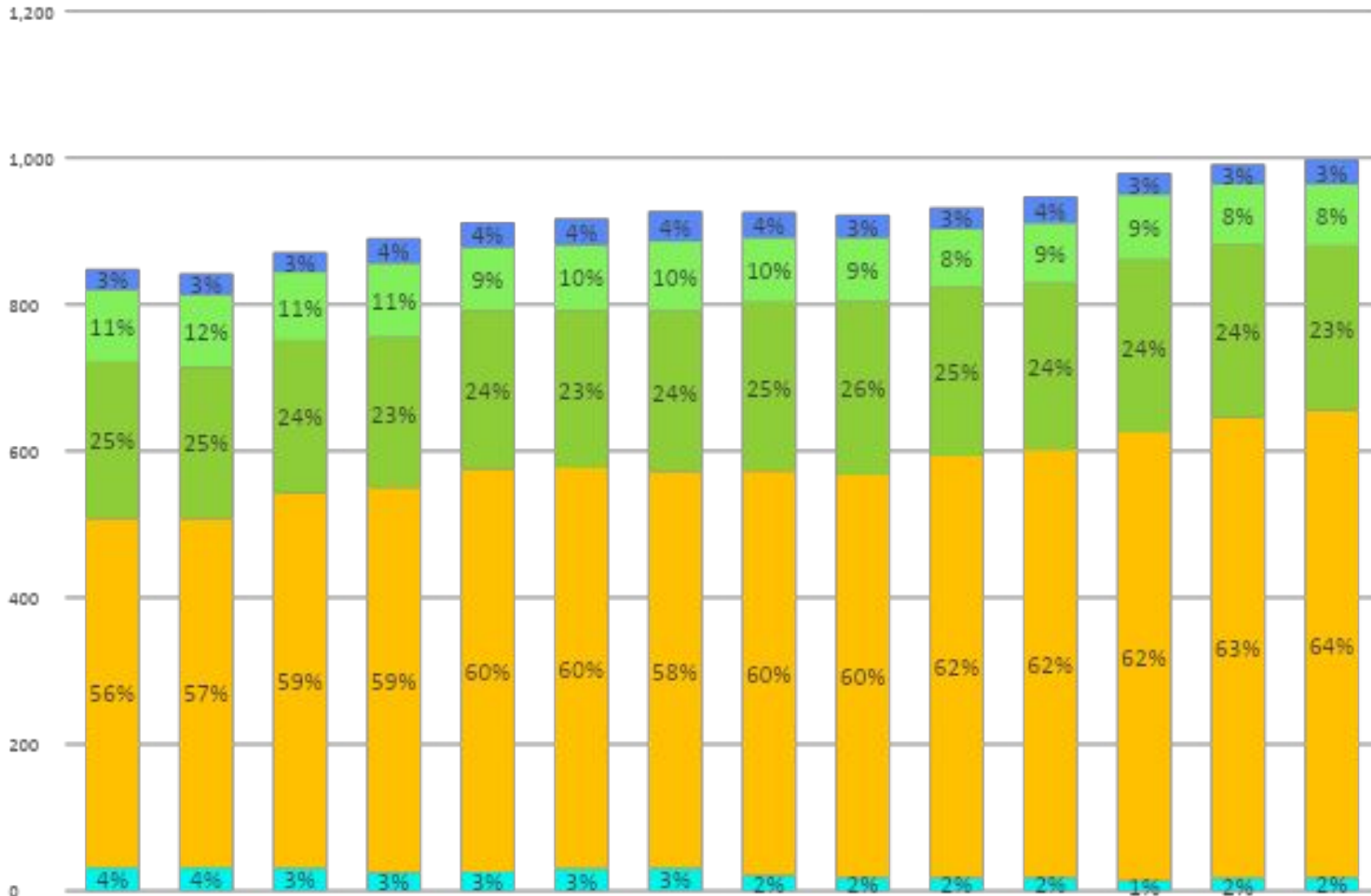
NOTE: Rolling 6 month average of children who exited for reunification and guardianship
Data Source: DCS Einstein, 8.12.2020

Runaway Youth



NOTE: August 2020 data is preliminary.
Data Source: AMPM - OOH Statewide, 8.29.2020

Children in Out-of-Home Care (18-21 years old)

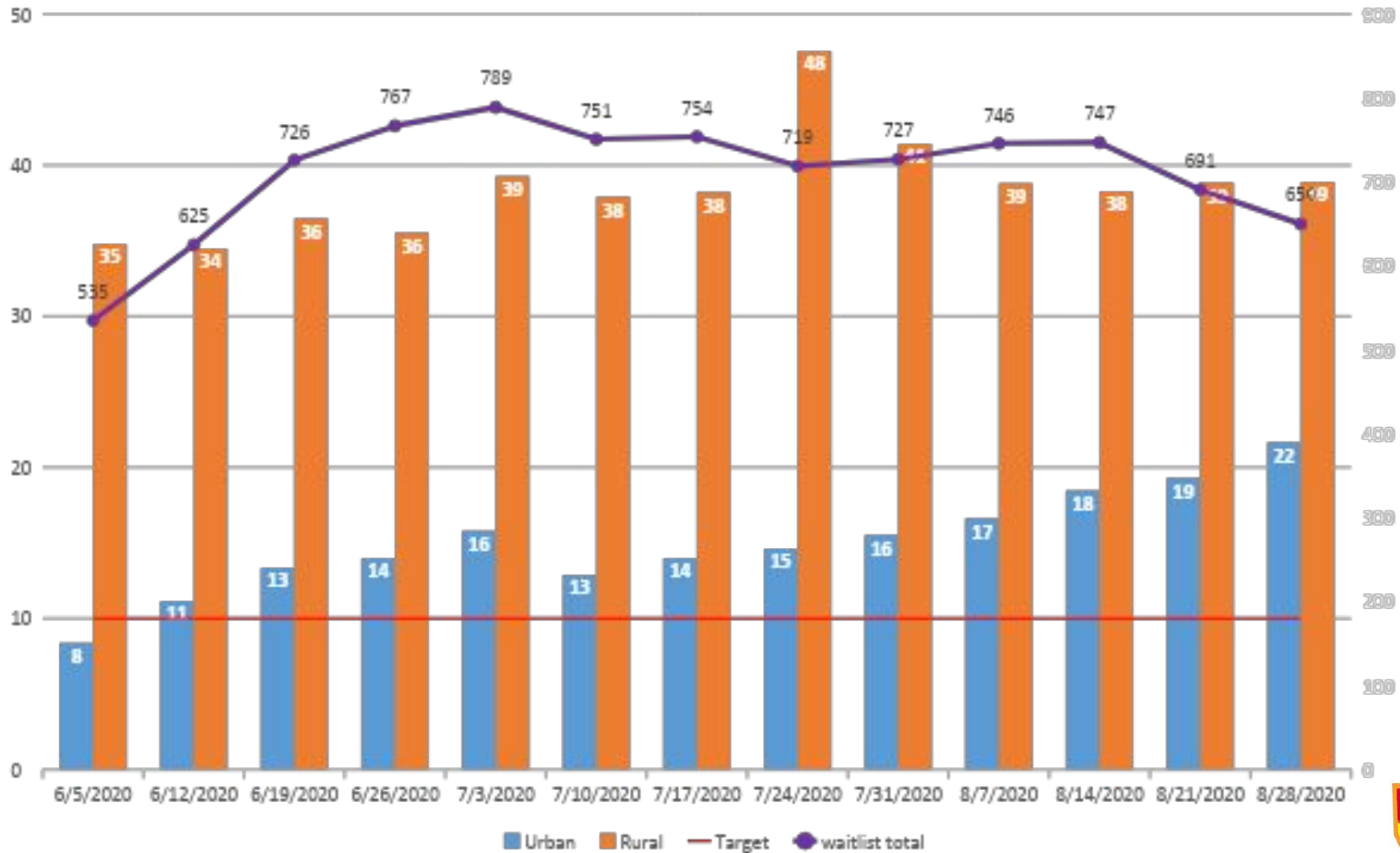


NOTE: July 2020 data is preliminary

Data Source: DCS Monthly Out-of-Home Care Report, 8.20.2020

Service Referral Waitlist

Average Age of all referrals on Waitlist by County Type



Data Source: Weekly DCS Waitlist Report