

NEW Welcome Center Project Update



Trauma-informed transition center for children entering foster care



History

- We had been looking for a new space for over 3 years
- The old space was a re-purposed government building with low ceilings, devoid of light, which elevated feelings of crisis with both the children we serve as well as staff
- The real estate team found an amazing space with floor-to-ceiling windows, huge skylights, and architectural character that lent itself to becoming the trauma-informed space we had envisioned
- Even the room layouts were perfect and provided for age-appropriate sleep and play areas, ample space on property to build outdoor play spaces, and even space for an on-site clinic



Challenges

- The site sat vacant for years and was pillaged by vandals, all copper plumbing had been stolen, all 14 air conditioning units on the roof had been stolen
- Tenant improvements on the space began in October 2022
- The need for investment beyond our operating budget was clear, so a capital campaign was launched in Fall of 2022 and nearly \$1 million was raised to pay for age-appropriate furnishings and outdoor playgrounds for the children.
- DCS took occupancy and began using the space in March 2023.



Indoor Spaces

- Intake walkway and intake room with showers and a separate room for lice treatment
- Crisis response room
- Nursery and Day room for infants
- Boys and Girls sleeping quarters for toddler, elementary and teens
- Game rooms for toddler, elementary and teens
- Sensory Room
- Indoor Play area
- Maker's Space/Small group activity space
- Commercial kitchen and café
- Donations warehouse
- Office space for Placement Administration, Kinship Support, and AHIT (After Hours Investigations Team)



Outdoor Spaces

- An abundance of natural light floods the facility, providing therapeutic benefit that “brings the outdoors in”
- Three outdoor playgrounds with artificial turf
 - Toddler
 - Elementary
 - Teen
- Two RV hookups for mobile health and dental clinics



Welcome Center Statistics

Safety · Compassion · Change · Teaming · Advocacy · Engagement · Accountability · Family

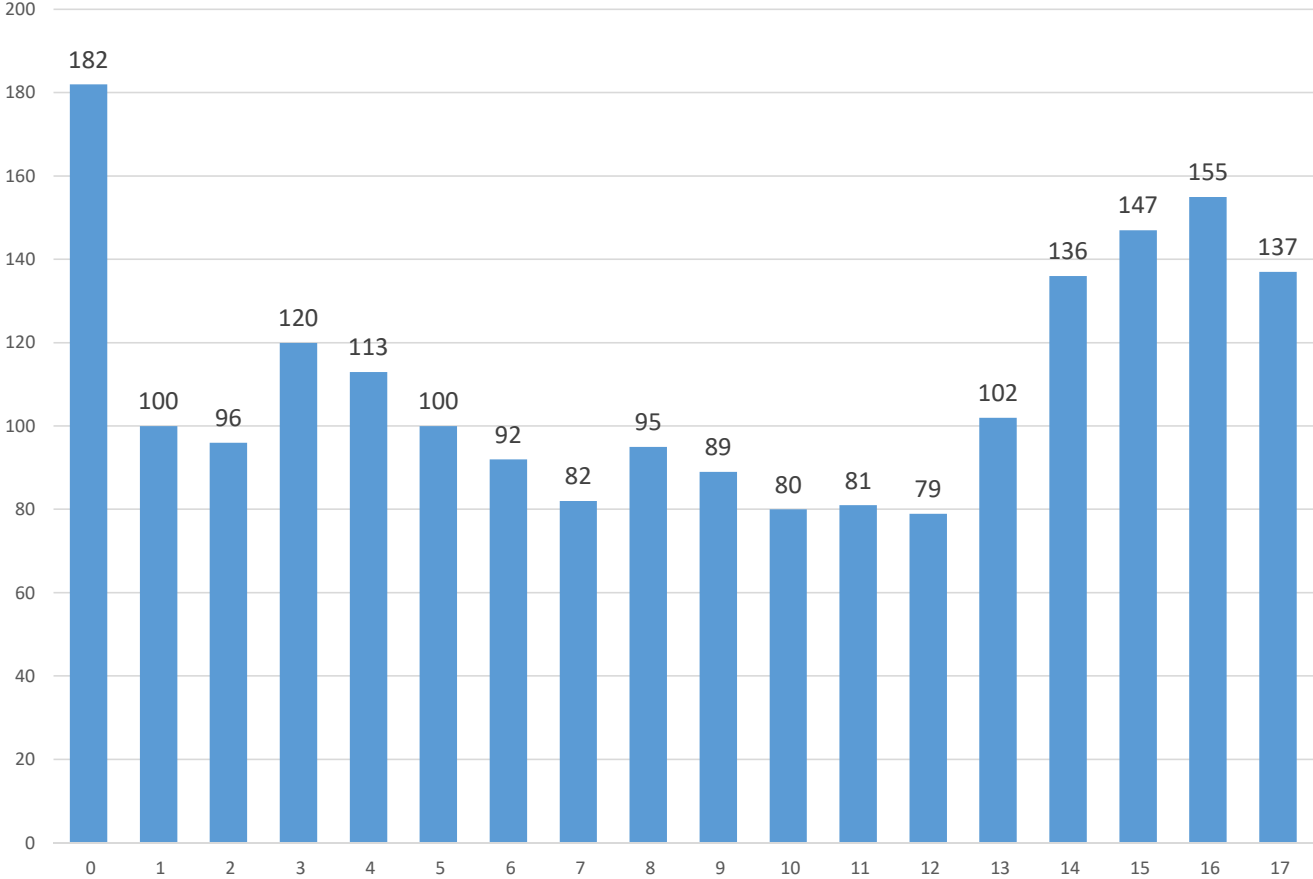


NEW Welcome Center

- Average 212 children enter the Maricopa Welcome Center each month
- Average duration of each child's stay is 48 hours
- Median duration of each child's stay is 24 hours
- 27% of all children entering care will stay at the Welcome Center at least once
- 20% of children entering care will stay at the Welcome Center as their first caregiver



Children Entering the Welcome Center by Age

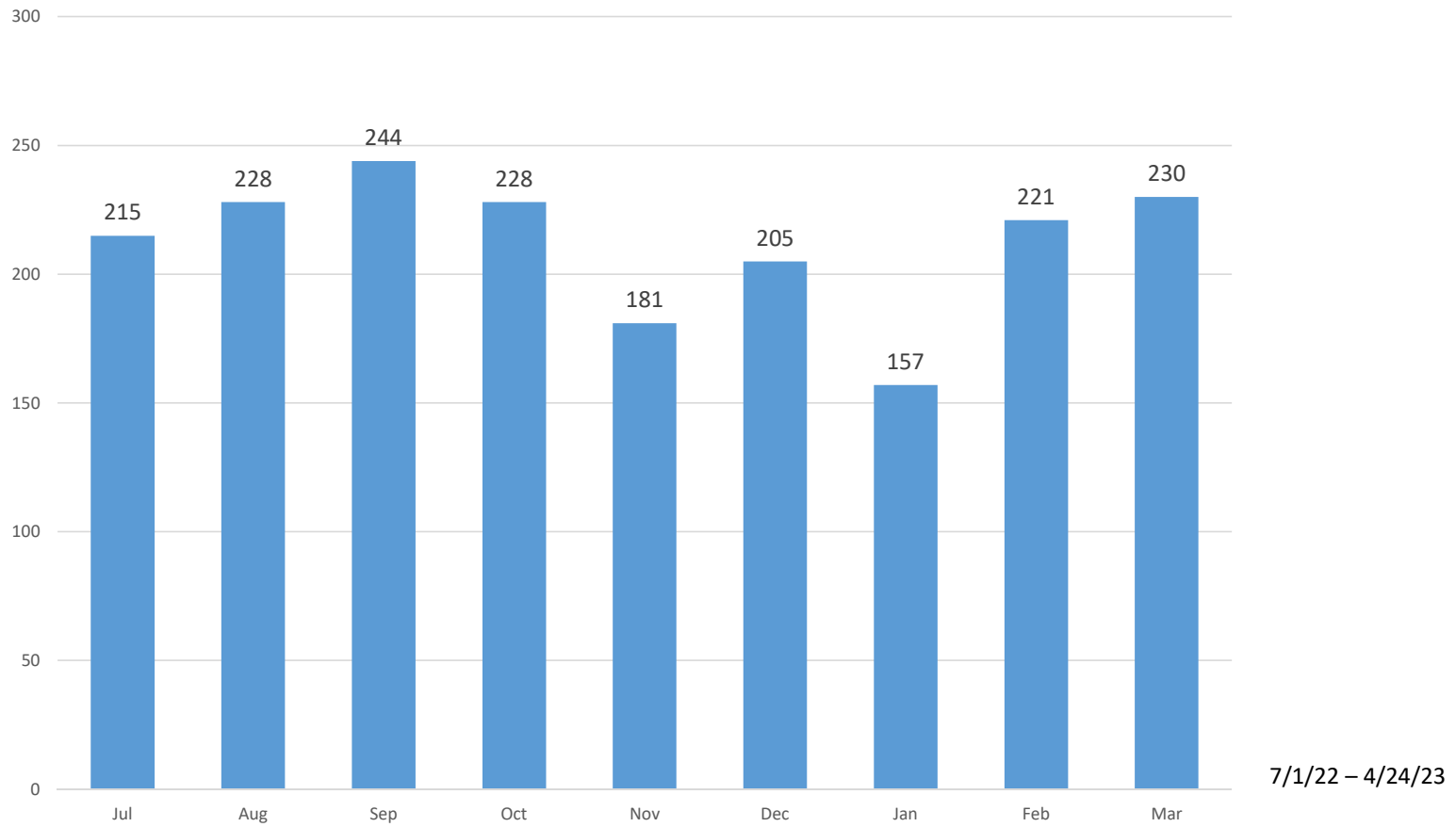


7/1/22 – 4/24/23

Safety · Compassion · Change · Teaming · Advocacy · Engagement · Accountability · Family



Children Entering the Welcome Center per Month



Safety · Compassion · Change · Teaming · Advocacy · Engagement · Accountability · Family



Are you ready to see it?

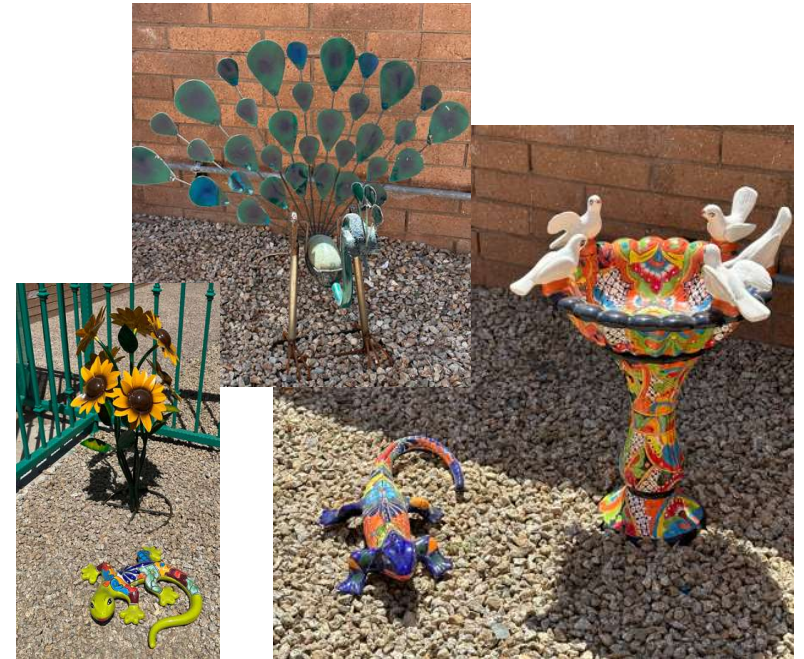
Safety · Compassion · Change · Teaming · Advocacy · Engagement · Accountability · Family



Intake Walkup and Entry Gate



Custom Gate crafted to echo “Disneyland” fence and painted a calming green



Whimsical Talavera animals and sculpture to greet children as they arrive



Intake Area (will be re-themed and designed – “A Day at the Beach”)



Hygiene and lice treatment room



Wall Mural to come... plus beach seating instead of home/office seating



The “Board” room. 😊

Safety · Compassion · Change · Teaming · Advocacy · Engagement · Accountability · Family



Nursery and Day Room



Pass-thru half door helps to quietly manage sleeping babies vs. active babies



Day Room overlooks toddler playground



Toddler Sleeping Quarters



Mural to come



Elementary Sleeping Quarters



Mural to come

Safety · Compassion · Change · Teaming · Advocacy · Engagement · Accountability · Family



Teen Sleeping Quarters



Murals to come

Safety · Compassion · Change · Teaming · Advocacy · Engagement · Accountability · Family



Toddler Play Room



Safety · Compassion · Change · Teaming · Advocacy · Engagement · Accountability · Family



Elementary Game Room



Safety · Compassion · Change · Teaming · Advocacy · Engagement · Accountability · Family



Teen Movie & Game Room



Mural to come

Safety · Compassion · Change · Teaming · Advocacy · Engagement · Accountability · Family



Sensory Room

Provides a safe but stimulating environment for children that need to explore and expel energy in a safe space, typically without other children in the room.

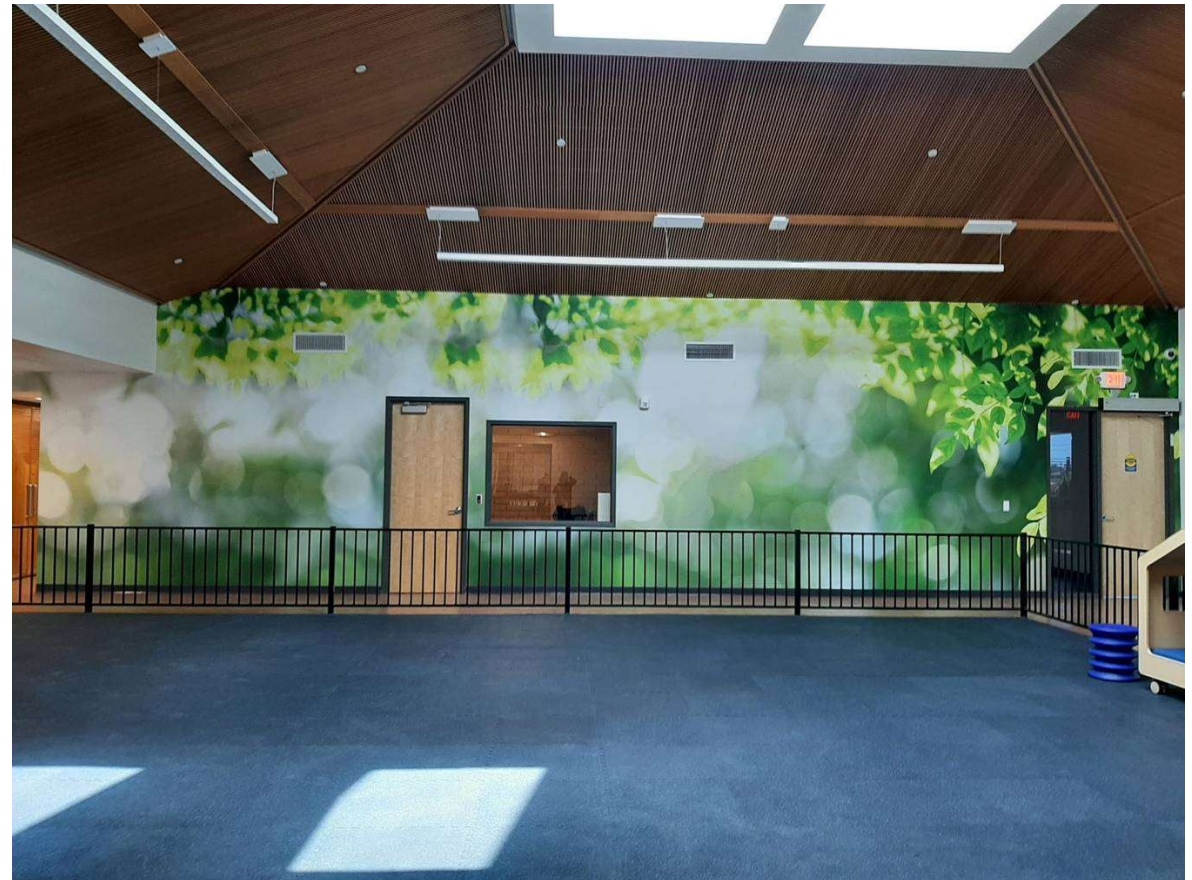


Safety · Compassion · Change · Teaming · Advocacy · Engagement · Accountability · Family



Indoor Play Area

- Vaulted ceiling with beautiful light streaming into the space
- Lots of space to run around inside, hold group fitness activities, etc.



Safety · Compassion · Change · Teaming · Advocacy · Engagement · Accountability · Family



Maker's Space / Small Group Activity Space



**YOU ARE ENOUGH.
YOU ARE LOVED.
YOU ARE WORTHY.
YOU ARE MAGIC.
YOU ARE PRICELESS.
YOU MATTER.**

Mural to come

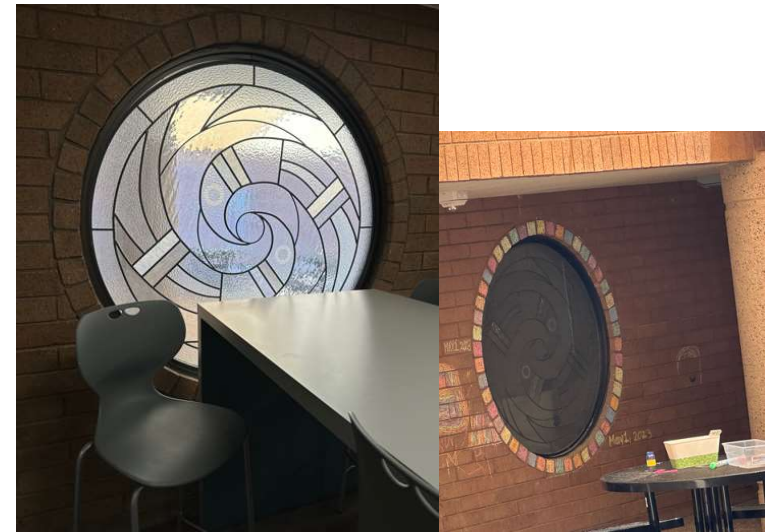
Safety · Compassion · Change · Teaming · Advocacy · Engagement · Accountability · Family



Commercial Kitchen and Café



Mural to come



Beautiful stained glass window from the outside, "chalk decorated" by youth shows they are very comfortable in the space.

Safety · Compassion · Change · Teaming · Advocacy · Engagement · Accountability · Family



Donations Warehouse



The “fancy ceiling” reveals that this was the ballroom of the facility previously... if you happen to recognize the space or if you have been to the facility, do not reveal its location for safety reasons

Safety · Compassion · Change · Teaming · Advocacy · Engagement · Accountability · Family



Toddler Playground



Mature trees surround the property, creating a comforting space.



Safety underlayment for all playground equipment



Safety · Compassion · Change · Teaming · Advocacy · Engagement · Accountability · Family



Elementary Playground



Safety · Compassion · Change · Teaming · Advocacy · Engagement · Accountability · Family



Teen Fitness and Sport Court



Safety · Compassion · Change · Teaming · Advocacy · Engagement · Accountability · Family



And yes, we also have Office Space



Safety · Compassion · Change · Teaming · Advocacy · Engagement · Accountability · Family



Coming Soon – An Onsite Clinic!

- Will serve children when they come to the Welcome Center using a trauma informed, integrated health care approach
- Secondarily, will serve children on DCS CHP Mercy Care Health Plan (CHP - Comprehensive Health Plan)
- Future plan is to open the clinic to the community
- Contracted with Phoenix Children's Hospital (PCH)



Thank you to our donors that made this possible!

- Mercy Care
- The Diane and Bruce Halle Foundation
- TAP/AZ Technical Assistance Partnership of Arizona
- Mother's Grace
- Arrow Development
- Gillette Group
- The Thunderbirds
- Arizona Helping Hands
- #LoveUP Foundation
- The Ducey Family Foundation
- Krispin Jacobs Family Foundation
- Hope and a Future
- Play It Safe Playgrounds
- T.W. Lewis Foundation
- The Micetic Family
- Jeff and Janet Weninger
- The Studio Academy of Beauty
- Kathryn Pierson Pidgeon
- Danielle and Ryan Goad
- Maria Cristina Fuentes
- Elontec
- The Davis Group



Safety · Compassion · Change · Teaming · Advocacy · Engagement · Accountability · Family

