

Contents not to be
quoted or distributed
without prior written
permission.



Youth in Justice

Adam Fine, Ph.D.

Presentation for the Arizona Juvenile Justice Commission



ASU School of Criminology
and Criminal Justice
Arizona State University



Roadmap

- Tutoring
- Destruction of Records
- Probation
- Detention



Part 1: Tutoring



Tutoring Program



A Youth Justice Lab Program

Est. 2021

A new tutoring program for ASU students to work with youth experiencing juvenile detention in Maricopa, Pinal, and Mohave Counties.



Tutoring Program



Tutoring Program



Current

- ~6-10 per semester
- Detention only
- Course credit through ASU

Future plans

- ~8-12 per semester in detention
- Expand to probation and diversion?
 - Maricopa, Pima, Pinal, and Mohave
- AmeriCorps funding for students?
 - Need project manager



Part 2: Destruction of Records





Maricopa Partners:

- Judicial Branch of Arizona in Maricopa County
 - Juvenile Judicial Officers
 - Juvenile Court Administration
 - Juvenile Probation Department
 - Law Library Resource Center
- Office of the Public Advocate
- County Attorney's Office
- County Clerk of Court



Mercedes Tang



Destruction of Records

~250
views/month

Do you have a juvenile delinquency or diversion record in Maricopa County?

- You might be eligible for:
 - destruction of records
 - restoration of civil rights (firearms)
 - set aside of a juvenile adjudication
 - expungement of marijuana offenses.

This page can help you learn about and start that process.

But first, a quick legal disclaimer:

- The following information is for educational purposes only. It is not legal advice. You should consult with an attorney.

The Process

- Start by getting your record
 - Download and fill out [this form](#).
 - Then, email your completed form to the Maricopa County Juvenile Probation Department: juvenilerecordsrequests@jbazmc.Maricopa.gov. They will do a records check and return a Public Profile, which is a summary of your juvenile legal or probation records.



asu.co1.qualtrics.com/jfe/form/SV_7ZZryUHwLOap5Zk



Survey Completion

The Juvenile Records Eligibility Tool

~360 uses

What is this tool?

- This tool will help you learn if you might be eligible to get your record destroyed, get your adjudication set aside, get your record expunged, or get your civil rights restored in Maricopa County for a juvenile offense. This is NOT for adult offenses.

Is it legal advice?

- No. It is not legal advice.

What happens if it says I'm eligible? What if I'm not eligible?

- You will be able to follow a link to another tool that can tell you what you could do next.

Is it anonymous?

- 100%. This does not collect anything identifying about you. We don't ask for your name, address, phone number, IP address, or anything identifying about you.



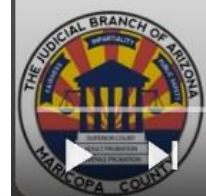
ASU
School of
Criminology and
Criminal Justice
Arizona State
University



~100 uses

Maricopa County Juvenile Records: E-filing Application Walkthrough

Created by the Youth Justice Lab at ASU



Maricopa County: E file Walkthrough

Video player controls including a channel icon for YouthJusticeLab ASU, buttons for Analytics and Edit video, and icons for likes (0), share, download, and a menu.

Part 3: Probation

Juvenile Probation

Goals

- alternative to incarceration
- refer to services
- reduce stigmatization
- reduce costs

Juvenile Probation

Originally intended to have small caseloads

“The workhorse of the juvenile justice system”

Parent/family and dual supervision



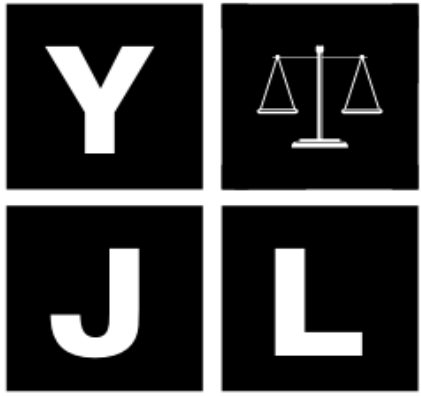
Families Matter...
but where do we go from here?

Ongoing project

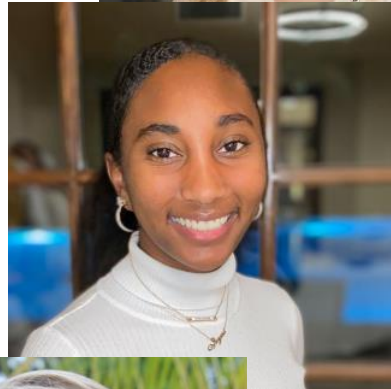
- Family-Youth Engagement Project
- Two counties in AZ
 - One rural, one urban
 - Interns survey youth and families throughout the probation experience



THE ANNIE E. CASEY FOUNDATION



YOUTH JUSTICE LAB



Three Papers



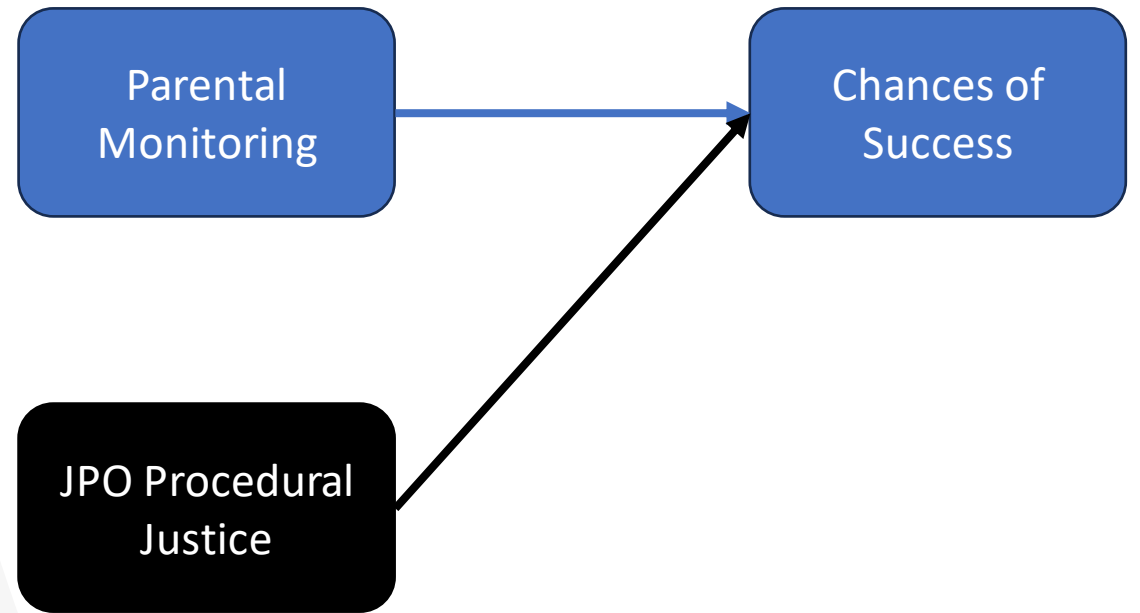
Procedural Justice



Contacts



Incentives



Contacts



IN-PERSON



VIDEO



PHONE



TEXT MESSAGE

Incentives





Incentives



Praise/Recognition



Autonomy/Restrictions



Monetary

A tall wooden ladder stands vertically in the center of a vast, open landscape. The landscape is a mix of light brown and tan colors, suggesting a dry or semi-arid environment with rolling hills or a wide plain. The sky is a clear, bright blue, filled with scattered white clouds. The sun is visible in the upper left corner, creating a soft glow. The ladder is made of dark wood and has several rungs. The overall scene conveys a sense of reaching for a goal or a path forward.

Future of the Probation and Family- Engagement Work



Family-Youth Engagement Project: V2.0

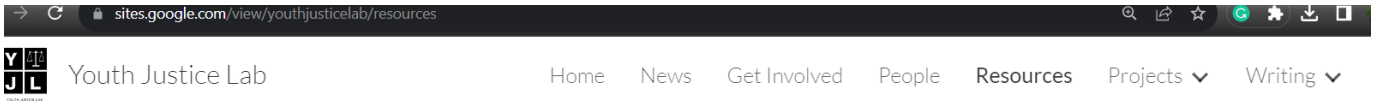
- Revised goals:
 - a) understand youth and families' experiences with probation,
 - b) understand how youth are faring after probation ends,
 - c) provide youth with access to resources that can support them,
 - and d) deliver this information to the county automatically in the dashboards so they are aware of whatever issues arise and what may need to be addressed.



Family-Youth Engagement Project: V2.0

- Two Tools:
 - Experiences
 - 3 months into probation
 - Off of probation
 - Outcomes
 - 3 months after probation ends
 - 6 months after probation ends
- Experiences
 - Relationships with POs
 - Family Involvement
 - Access to services
- Outcomes
 - Housing
 - Community Support
 - Mental Health
 - Substance Use
 - Employment/Education
 - Leisure
 - Family

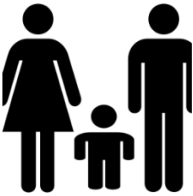
Resources



Community Resources

Resources in Maricopa County, Arizona

Below, you will find lists of resources in Maricopa County, Arizona. We categorized them by family, housing, education, substances, mental health, and community support.



Family

Domestic violence,
family planning,
family counseling



Housing

Affordable housing,
emergency shelters



Education

Tutoring programs,
post-secondary
education



Substances

Substance use
counseling,
outpatient &
inpatient care



Mental Health

Behavioral
counseling, suicide
hotline



Community

Support

Health, dental,
support groups,
after-school
programs, LGBTQ,

Part 4: Detention

Detention Survey Project

- **Intervals**
 - Pre: Youth
 - Post: Youth and Guardians
- **Two counties in AZ**
 - Both more rural than urban
- **How?**
 - Tablet or computer upon entry/exit
- **Automated data cleaning and dashboard**
 - Accessible 24/7 to jurisdiction staff (password protected)





Adam Fine, Ph.D.

PI, Youth Justice Lab

School of Criminology & Criminal Justice, Arizona State University

adfine@asu.edu

