



ARIZONA FAITH AND FAMILIES

&

GARDEN HOUSE INC.

Working in partnership to transition youth out of congregate care



WELCOME AND INTRODUCTIONS

Garden House Inc. and Arizona Faith and Families established their partnership in 2015. Beginning first with training, the partnership evolved to partnering to find youth foster families.



FAITH & FAMILIES

A BIBLICAL MODEL FOR FOSTER CARE AND ADOPTION



Garden House, Inc



OUR VISION & MISSION

Our **vision** is to connect each youth in foster care with a safe and caring adult. To see congregate care as a stepping stone toward healing and as a setting that works in partnership to successfully transition children into families.

Our **mission** is to **encourage** community members to be actively involved in foster care through regular volunteer opportunities. To **equip** congregate care staff members to prepare children to transition into families through a structured training program. And to **empower** youth to build strong and healthy attachments through regular community engagement.



BARRIERS TO CONNECTING YOUTH WITH FAMILIES



Historically congregate agencies are not open to partnering with licensing agencies



Foster families are less likely to foster children over the age of 7 or accommodate larger sibling groups



Youth in congregate care may display higher needs behaviors and be nervous about transitioning to a family



REMOVING BARRIERS BETWEEN AGENCIES



This history of mistrust between congregate care agencies, DCS, and licensing agencies



Removing barriers through strong partnerships that supply mutually beneficial goods and services



Invest in staff members through training, care, and support



REMOVING BARRIERS TO RECRUITING FOSTER FAMILIES



Recruitment with a potential applicant starts years before the applicant actually applies to become a foster parent



Providing regular volunteer opportunities with youth in foster care humanizes their story and life



Building a connection prior to placement leads to greater outcomes of success and alleviates anxiety from both children and caregivers



REMOVING THE BARRIER OF BEHAVIORS AND ATTACHMENT



Foster youth share that they are afraid of being “kicked out” or disrupted from a foster home but that they still have hope of being accepted by a family



To alleviate fears we provide opportunities for youth to build relationships with caring and committed volunteers/foster parents



To decrease disruptions and promote stability, four key abilities were identified and are fostered within the congregate care setting: self-regulation tools, the ability to process and cope with change, develop flexibility, and build healthy connections



PRACTICAL APPLICATIONS: TRAINING



Employee Training

Attachment and Separation
Permanency and the Agency's Role
Trauma Informed Care



Volunteer Training

Quick overview of foster care
Provided at local churches
Conduit for volunteering



Camp Revive

Five-day camp for youth
Focuses on coping skills,
managing anxiety, and health



PRACTICAL APPLICATIONS: SUPPORT



Staff

- Provide staff lounge at events
- Invest in relationships with employees
- Meet their basic needs

(most become foster parents)



Volunteers

- Volunteer check-in after events
- Surveys
- Provide pathway to licensure



Youth

- Safe and secure environments
- Provide for basic needs
- Solicit requests and feedback
- Build network of support



PRACTICAL APPLICATIONS: EVENTS



Unplugged

Partner with The Family Room to host monthly events, the second Saturday of the month, retreats, camps, and birthday parties / celebrations



Holiday Parties

Group home partners are invited to agency events and celebrations. Staff members and youth are welcomed and celebrated as honorary members of Faith and Families



Christian Community Center

At C3, our partner True Pursuit hosts tutoring and skill-building three times a week for youth in congregate care. We established a partnership to co-host events, camps, and

CELEBRATING SUCCESS!

2022-2023

- The S. Family took in a sibling group of five from ages 0 to 13
- The R. Family took in a sibling group of four ages 8 to 13
- The B. Family took in a 9-year-old girl who had been in congregate care for over four years
- The L. Family took in a sibling group of two girls ages 13 and 17
- The R. Family took in a 17-year-old girl and her newborn daughter
- The W. Family took in a 17-year-old boy
- The K. Family took in a sibling group of two ages 5 and 7
- The F. Family took in a sibling group of two ages 13 and 11
- The K. Family took in a 13-year-old girl who had been in congregate care for five years





SUPPORTING THE PROGRAM



Invest

The program is currently self-funded by Arizona Faith and Families Charities



Grow

We are open and willing to expand our congregante care and church partnerships



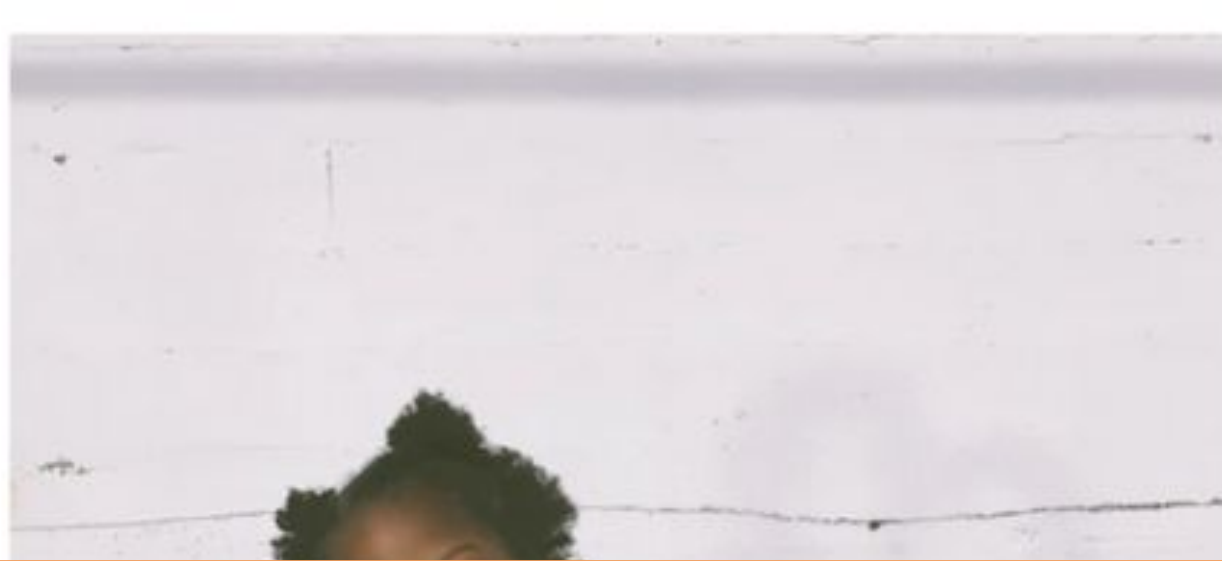
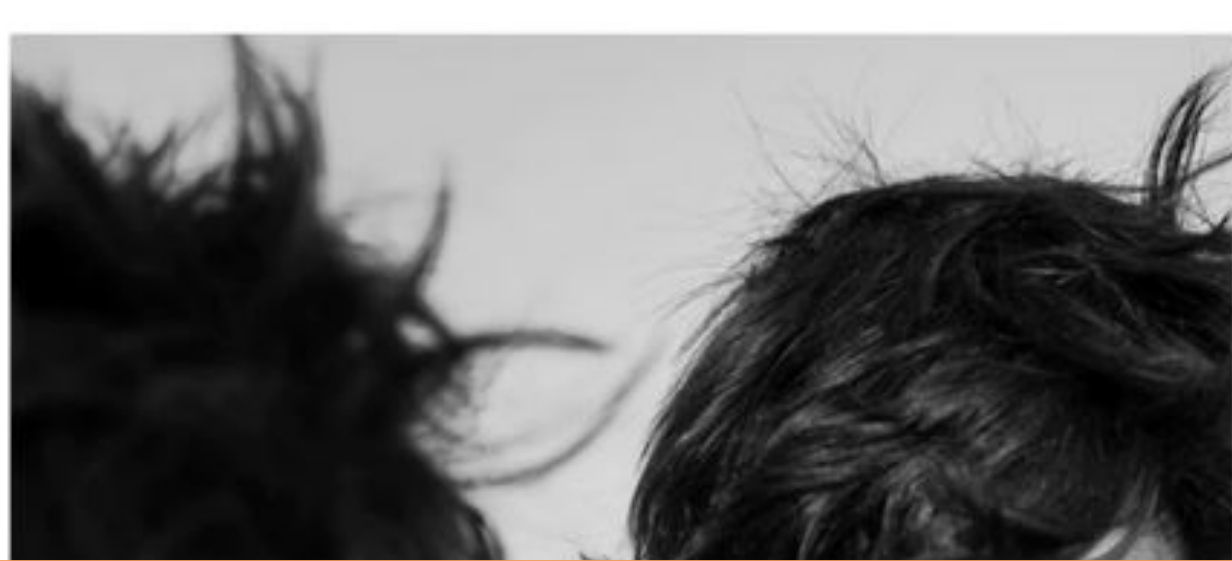
Support

Allow agencies time and opportunity to grow programs that lead to future success



Share

Share about our program with your church and spheres of influence, and invite us to share about the program



**Let us not become weary in doing good,
for at the proper time we will reap a
harvest if we do not give up.**





THANK YOU