




Governor's Human Trafficking Council-
10.29.19

SEX TRAFFICKING AND RECOVERY GROUP AT MOSAIC

Dominique Roe-Sepowitz
Arizona State University

Jennifer Perks & Gary Lopez
Maricopa County Correctional Health Services



THE MCCAIN INSTITUTE

for INTERNATIONAL LEADERSHIP

ARIZONA STATE UNIVERSITY

ESTRELLA JAIL

- Approximately 1,380 inmates
- All classifications
- Sex trafficking and inmates in Estrella



About MOSAIC

● TARGET POPULATION

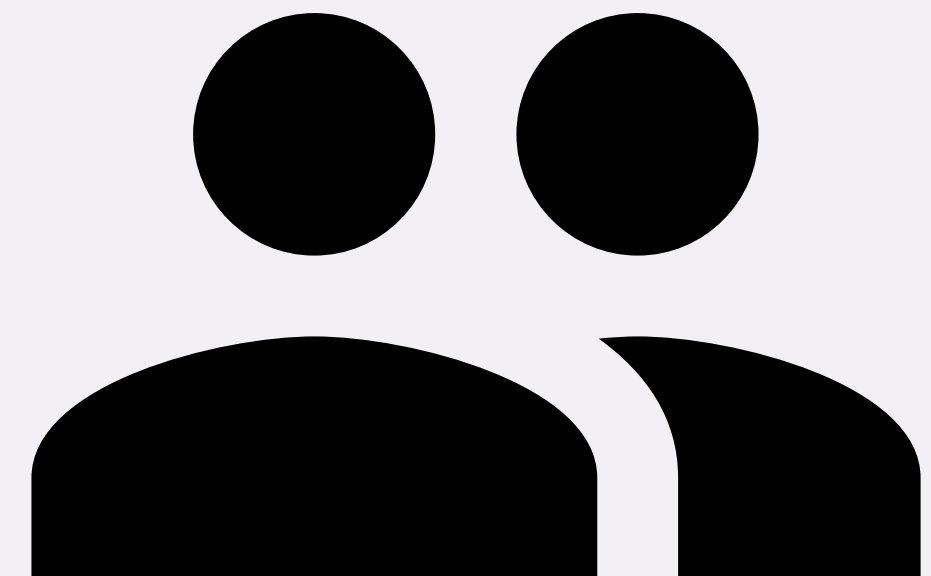
- Medium and high security inmates
- Histories of substance abuse
- High risk of recidivism

● CURRICULUM

- Seven week curriculum
- Topics: trauma, drug & alcohol addictive behaviors, criminal activity, violence

32 female

Participants Per Cohort



Methods

● RECRUITMENT

- Info session for all MOSAIC female participants
- Participation criteria
 - Experience(s) of sex trafficking or prostitution during their lifetime

● COHORTS

- Cohort 1: May 2019 (four weeks)
 - 14 enrolled, 11 completed
- Cohort 2: September 2019 (five weeks)
 - 15 enrolled, 13 completed

● INSTRUMENTS

- Historical measures:
 - Life history survey
 - Adverse Childhood Experiences (ACEs)
- Pre and post assessment measures:
 - Self-esteem
 - Motivation to change
 - Trauma symptoms

The Intervention: **STAR**

Sex Trafficking Awareness & Recovery

● **FORMAT**

- 4-5 weeks, 2 hours/week
- Psychoeducation
 - Discussion & activities
- Lead by PhD clinical social worker with MSW student apprentice



SAMPLE ACTIVITIES

Family Lessons

Things I learned from my family:

Lessons you want to keep:	Lessons you want to let go:

What are my triggers?

People	
Places	
Things	
Smells	
Time/date/season	

When I come into contact with these triggers- and I am not able to avoid them-what can I plan to do?

People	
Places	
Things	
Smells	
Time/date/season	

Characteristics of the Participants

● RACE

Caucasian 12 (41.4%)

Mixed Race 7 (24.1%)

American Indian 4 (13.8%)

African American 3 (10.3%)

Hispanic 3 (10.3%)

● AVERAGE AGE 32.7

Age ranged from 23-49-years-old.

● CHILDREN

27 (93.1%) had children

13 (48.1%) had experienced DCS remove their children.

The Participants

75.9% HAD A
HISTORY OF
RUNNING
AWAY

48.3% HAD
BEEN IN
SPECIAL
EDUCATION
CLASSES

27.6% HAD
BEEN IN A
GANG

Participants' Experiences

PHYSICAL ABUSE
62.1%

EMOTIONAL ABUSE
37.9%

SOCIAL SERVICES
INVOLVED IN THIER
FAMILIES 55.2%

SEXUAL ABUSE
69%

EMOTIONAL ABUSE
37.9%

WITNESSED
DOMESTIC
VIOLENCE AS A
CHILD 58.6%

FAMILY MEMBER
IN JAIL 79.3%

FAMILY MEMBER
ALSO SEX
TRAFFICKED 31%

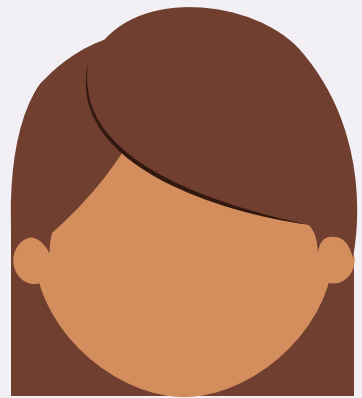
SUICIDE ATTEMPT
62.1%

TEEN DATING
VIOLENCE 58.6%

CUTTING 58.6%

ADULT SEXUAL
ASSAULT 69%

PARTICIPANTS



Average
ACEs
Score

=
6.10



Childhood
Abuse

(sexual & physical)

=
69% & 62.1%



Mental
Health
Diagnosis

=
75.9%



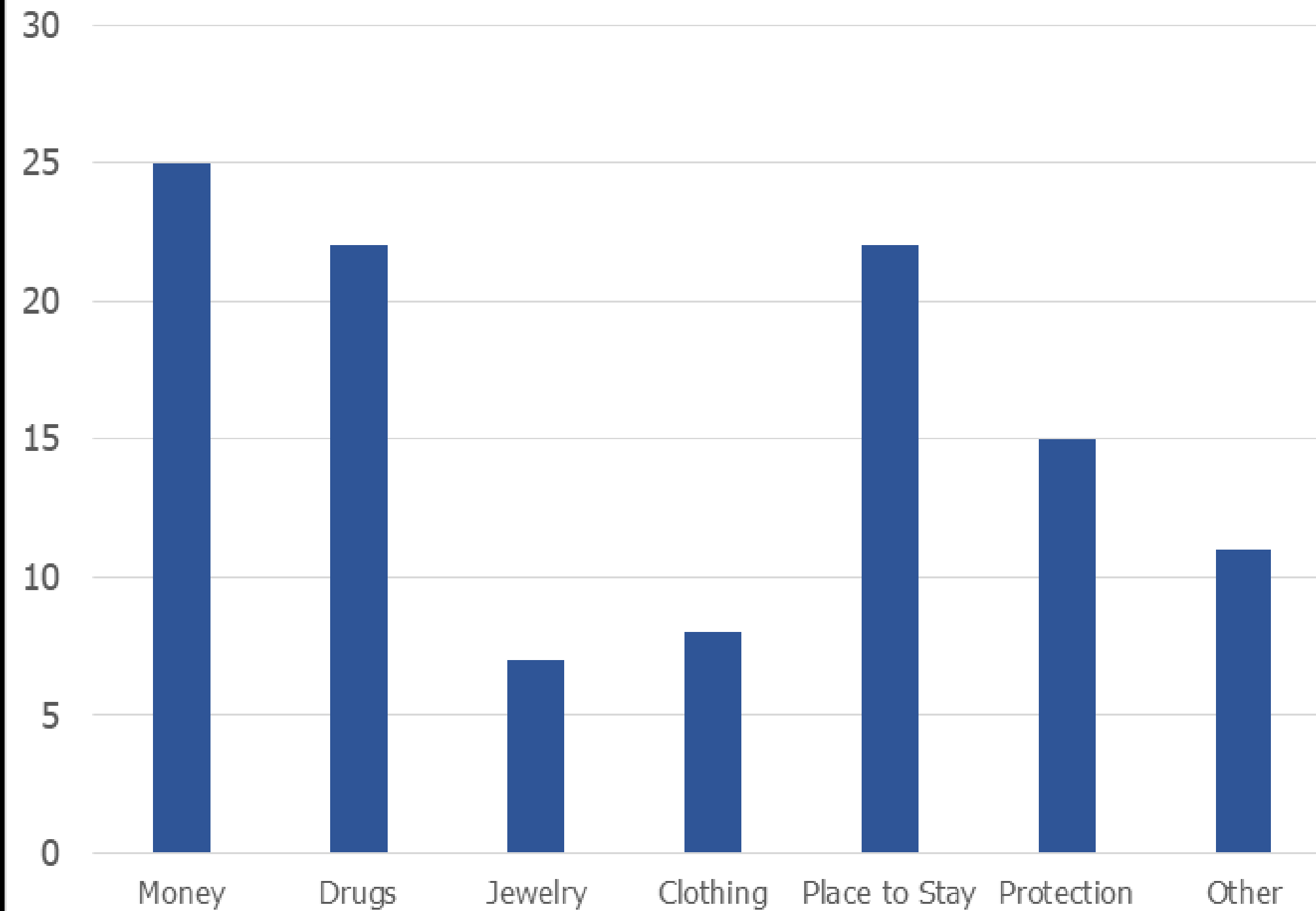
Domestic
Violence
Involvement

=
86.2%



Addiction to drugs/alcohol = **100%**

Reason for Sex Exchange



FINDINGS: PRE/POST

MOTIVATION TO CHANGE

No significant changes
found

SELF-ESTEEM

No significant changes
found

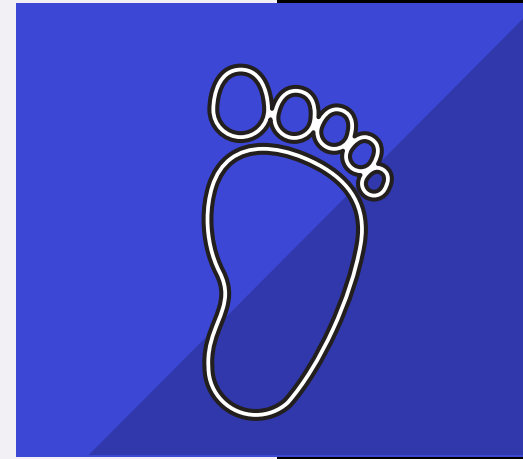
TRAUMA SYMPTOMS



All ten symptom subscales
showed significant
improvement following
intervention

Anxious Arousal
Depression
Anger & Irritability
Intrusive Experiences
Defensive Avoidance
Dissociation
Sexual Concerns
Dysfunctional Sexual Behavior
Impaired Self-Reference
Tension Reduction Behaviors

IMPLICATIONS



Complex & Difficult Childhoods



Significant Mental Health & Substance Abuse Challenges



Trauma Symptom Reduction

What we learned

- **DURING THE ADVERTISEMENT MEETING AND THE 1ST GROUP-LACK OF DEFINITIONS/ KNOWLEDGE**
- **EXCELLENT CLIENT ENGAGEMENT AND PARTICIPATION**
- **CHALLENGES WHEN THEY GET OUT**
 - *NO CASE MANAGEMENT**
 - *NO LINK TO SERVICES**

1. TRAINING DESIGNED FOR
CORRECTIONS/DETENTION
OFFICERS

-NOVEMBER 4, 14, 18

TARGETED TO:

JAIL INTEL STAFF

INTAKE STAFF

CLASSIFICATION STAFF

MEDICAL/MENTAL HEALTH STAFF

PREA STAFF

2. DESIGN TRAINING BROCHURE
WITH EXPERTS

**NEXT
STEPS**

RECOMMENDATIONS

IDENTIFY VICTIMS

1. Train all jail staff on red flags
2. Screen for sex trafficking victimization
3. Have a central point of contact in the jail
4. Identify risk factors for sex trafficking victimization (look at known groups) and offer services (inside and referrals to outside services)

RECOMMENDATIONS PREVENTION

1. Flag vulnerable adults (screening)
2. Consider release times
3. Explore patterns of \$ on the inmates books
4. Discuss release plan (to a safe place)
5. Have appropriate clothes and hygiene products available when released
6. Jail have information about crisis resources

Thank you!

The slide features a white background with a decorative graphic on the right side. This graphic consists of several overlapping geometric shapes: a large blue triangle pointing downwards, a smaller black triangle pointing upwards, and another blue triangle pointing downwards, all situated in the upper right quadrant of the slide.