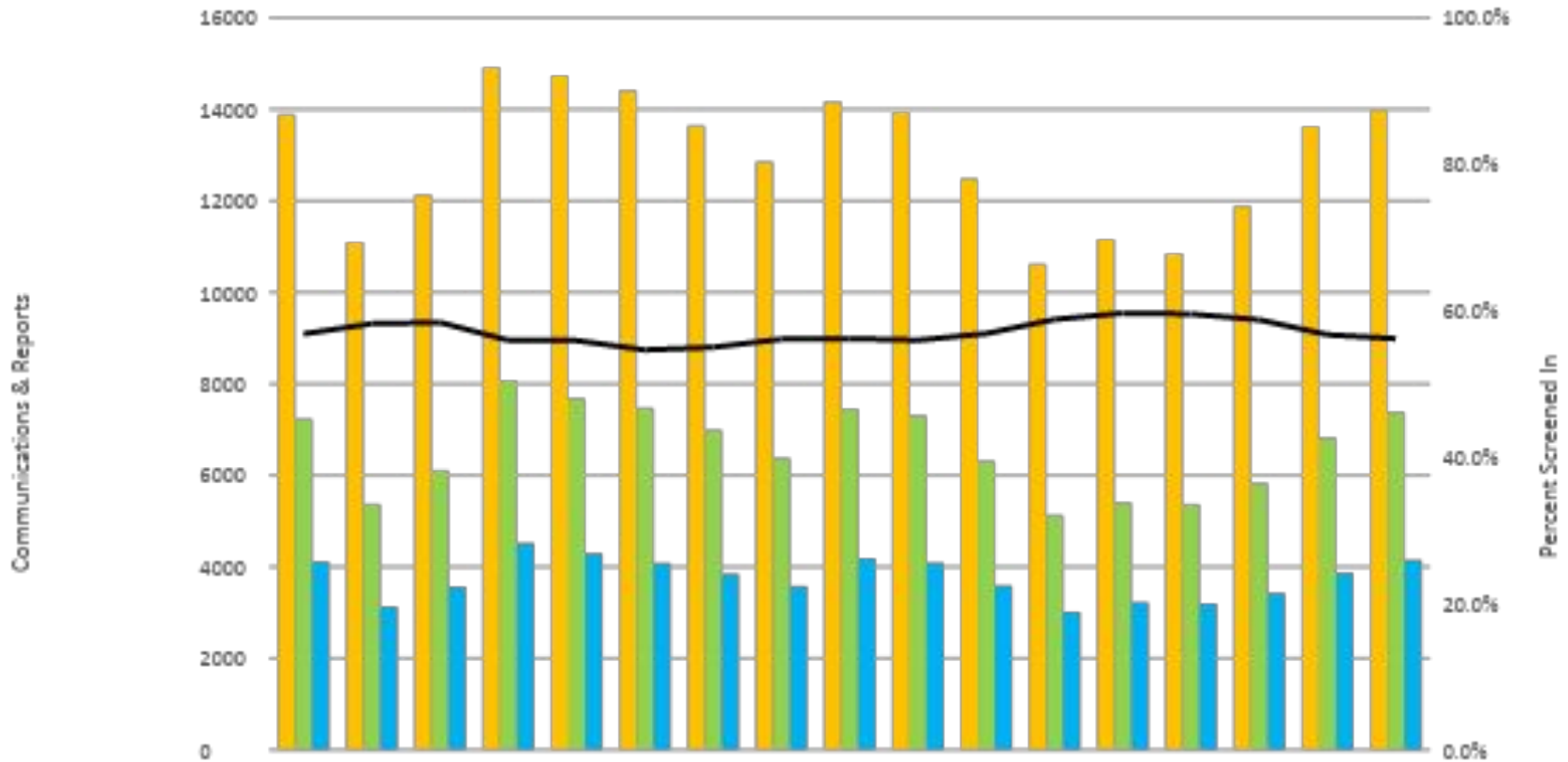


# Department of Child Safety

Data charts as of week beginning 11.02.2020



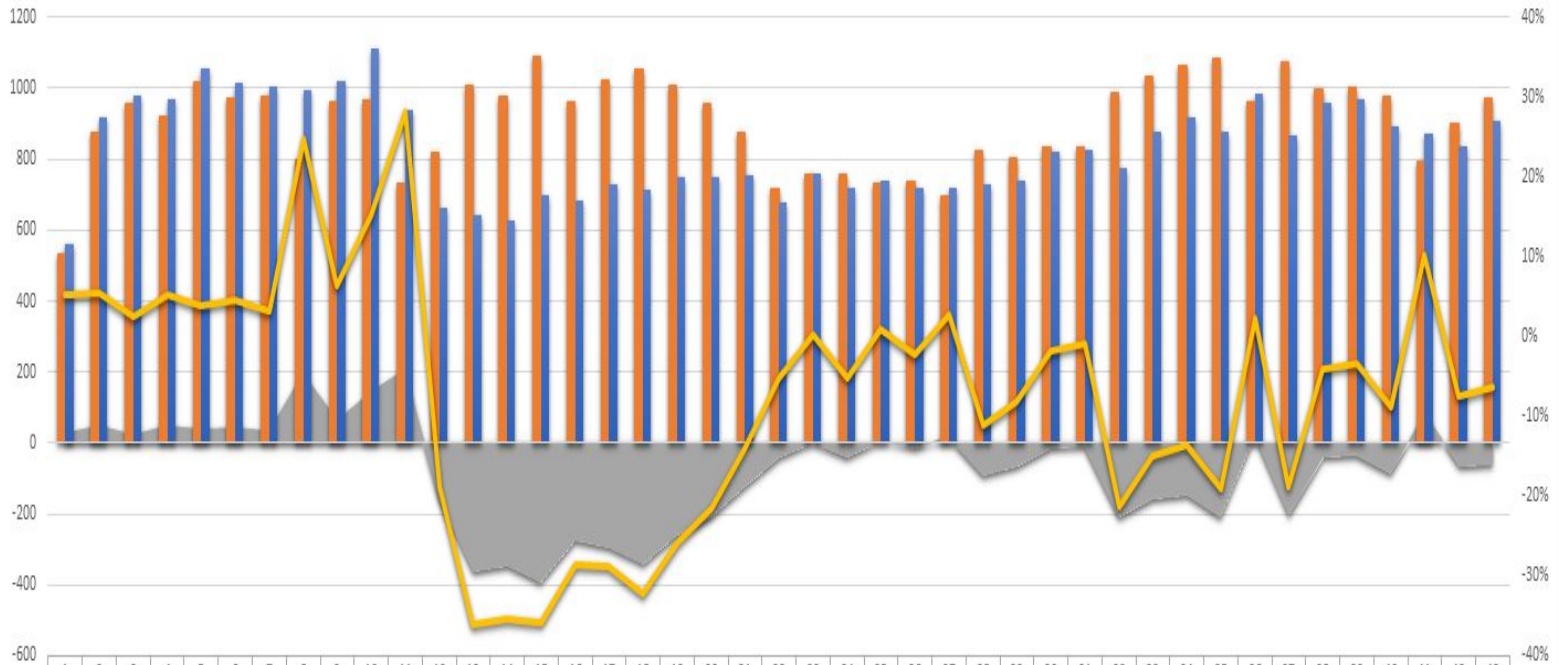
# Communications & Reports to the Hotline



NOTE: Communications, Hotline Communications, and Reports include calls/reports that are no jurisdiction reports. Screen In % shows reports as a percentage of total Hotline Communications.  
 Data Source: DCS Tableau Dashboard, Communications Received by Weekday and Hour Reports, 10.31.2020

All Reports in CHILDS regardless of source type:

Weekly Reports - All Source Types (2019 vs 2020)

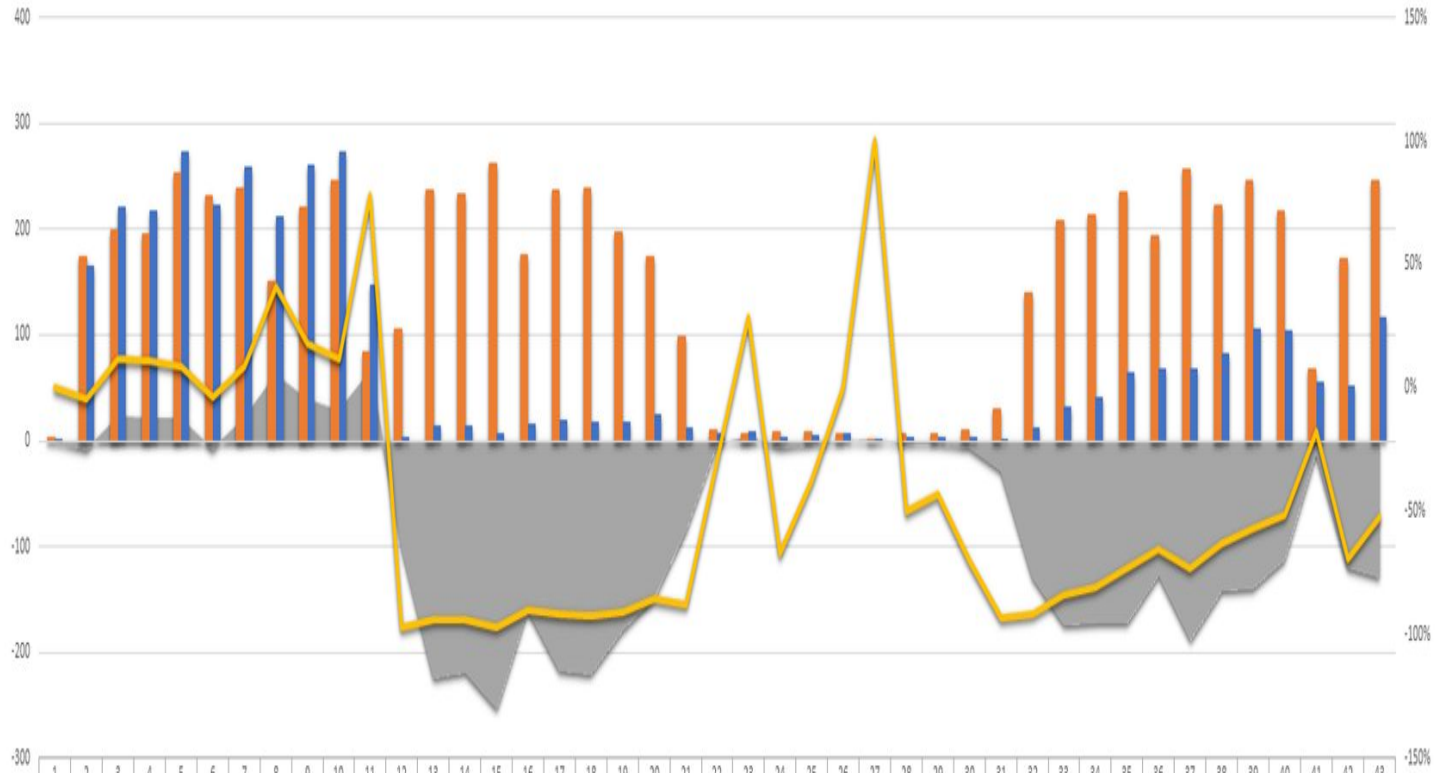


All Source Var.	28	47	23	48	39	45	31	197	61	146	206	-154	-362	-346	-391	-274	-294	-339	-260	-207	-123	-38	1	-39	6	-16	19	-92	-65	-15	-7	-210	-156	-146	-206	22	-202	-40	-34	-86	81	-67	-61
2019-All Sources	532	873	955	920	1016	972	974	797	960	965	733	816	1005	975	1089	959	1022	1054	1009	957	876	717	759	756	733	735	698	821	804	835	835	986	1035	1065	1084	963	1071	999	1003	977	791	901	971
2020-All Sources	560	920	978	968	1,055	1,017	1,005	994	1,021	1,111	939	662	643	629	698	685	728	715	749	750	753	679	760	717	739	719	717	729	739	820	828	776	879	919	878	985	869	959	969	891	872	834	910
% All Source Var.	5%	5%	2%	5%	4%	5%	3%	25%	6%	15%	28%	-19%	-36%	-35%	-36%	-29%	-29%	-32%	-26%	-22%	-14%	-5%	0%	-5%	1%	-2%	3%	-11%	-8%	-2%	-1%	-21%	-15%	-14%	-19%	2%	-19%	-4%	-3%	-9%	10%	-7%	-6%

All Source Var.
  2019-All Sources
  2020-All Sources
  % All Source Var.



Weekly Reports - School Setting Source Type (2019 vs. 2020)



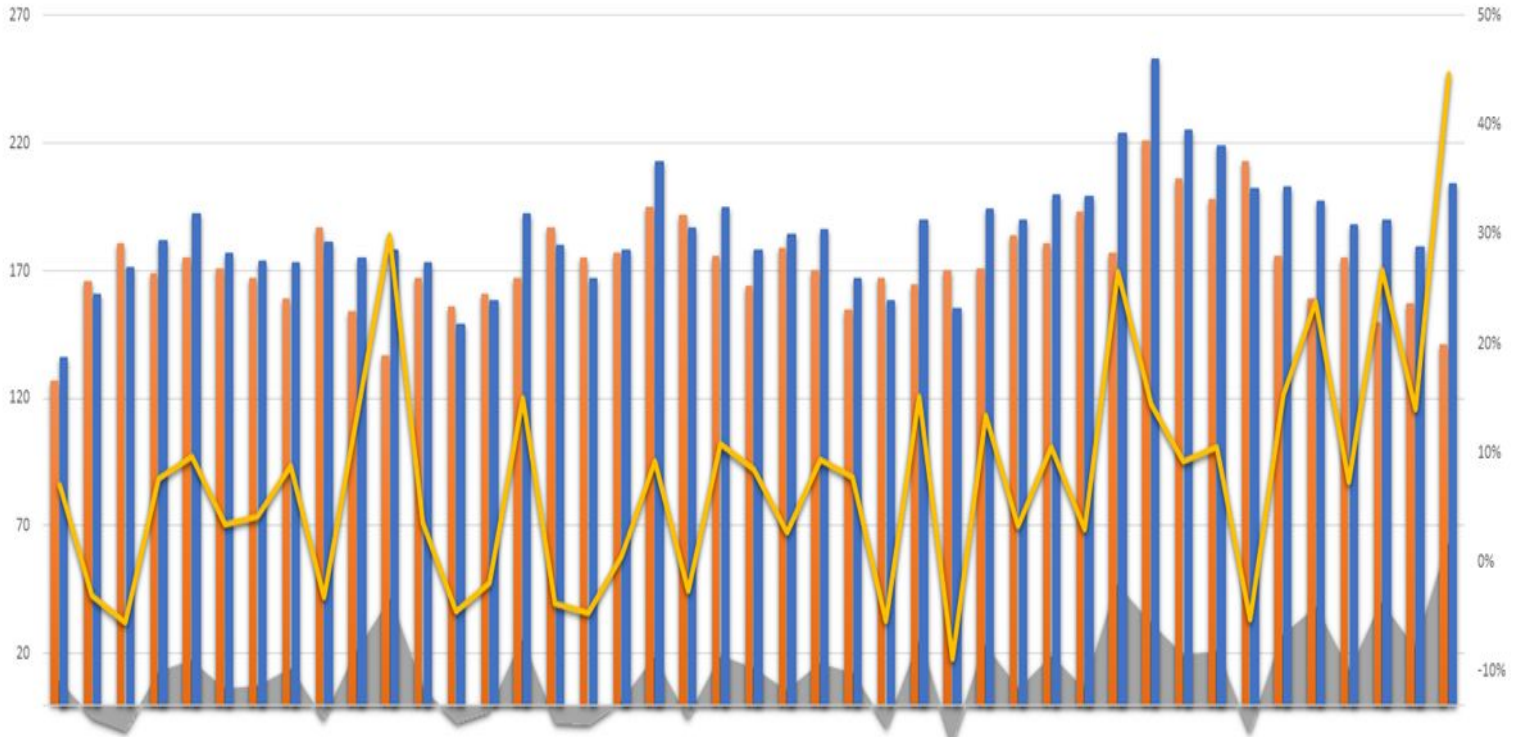
School Var.	0	-8	23	21	21	-8	21	62	39	28	65	-102	-223	-218	-253	-159	-216	-220	-179	-148	-86	-3	2	-6	-3	0	1	-3	-3	-7	-27	-128	-174	-172	-171	-126	-187	-141	-139	-112	-12	-119	-129
2019-School	2	173	198	196	253	231	238	151	221	246	83	105	237	233	261	176	236	238	197	173	98	10	7	9	8	7	1	6	7	10	29	140	207	214	235	194	256	223	245	217	68	172	246
2020-School	2	165	221	217	274	223	259	213	260	274	148	3	14	15	8	17	20	18	18	25	12	7	9	3	5	7	2	3	4	3	2	12	33	42	64	68	69	82	106	105	56	53	117
% School Var.	0%	-5%	12%	11%	8%	-3%	9%	41%	18%	11%	78%	-97%	-94%	-94%	-97%	-90%	-92%	-92%	-91%	-86%	-88%	-90%	29%	-67%	-38%	0%	100%	-50%	-43%	-70%	-93%	-91%	-84%	-80%	-73%	-65%	-73%	-63%	-57%	-52%	-18%	-69%	-52%

School Var. 2019-School 2020-School % School Var.



Reports in CHILDS coded as Law Enforcement source type:

Weekly Reports - Law Enforcement Source Type (2019 vs. 2020)

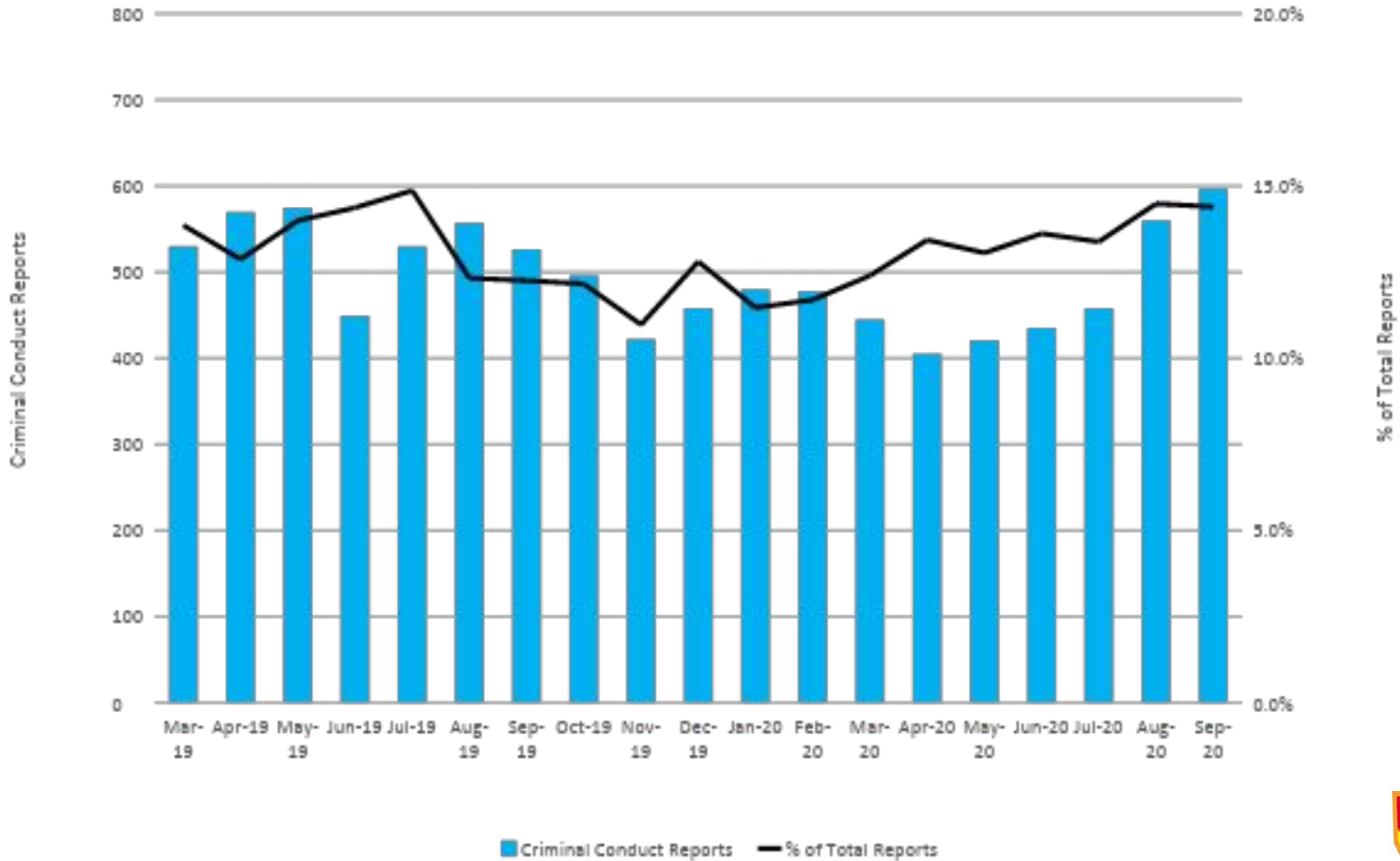


	1	2	3	4	5	6	7	8	9	10	11	12	13	14	15	16	17	18	19	20	21	22	23	24	25	26	27	28	29	30	31	32	33	34	35	36	37	38	39	40	41	42	43
Law Var.	9	-5	-10	13	17	6	7	14	-6	21	41	6	-7	-3	25	-7	-8	1	18	-5	19	14	5	16	12	-9	25	-15	23	6	19	6	47	21	206	198	213	176	159	175	150	22	63
2019-Law	127	166	181	169	175	171	167	159	187	154	137	167	156	161	167	187	175	177	195	192	176	164	179	170	155	167	165	170	171	184	181	193	224	253	225	219	202	203	197	188	190	179	141
2020-Law	136	161	171	182	192	177	174	173	181	175	178	173	149	158	192	180	167	178	213	187	195	178	184	186	167	158	190	155	194	190	200	199	224	253	225	219	202	203	197	188	190	179	204
% Law Var.	7%	-3%	-6%	8%	10%	4%	4%	9%	-3%	14%	30%	4%	-4%	-2%	15%	-4%	-5%	1%	9%	-3%	11%	9%	3%	9%	8%	-5%	15%	-9%	13%	3%	10%	3%	27%	14%	9%	11%	-5%	15%	24%	7%	27%	14%	45%

Law Var. 2019-Law 2020-Law % Law Var.



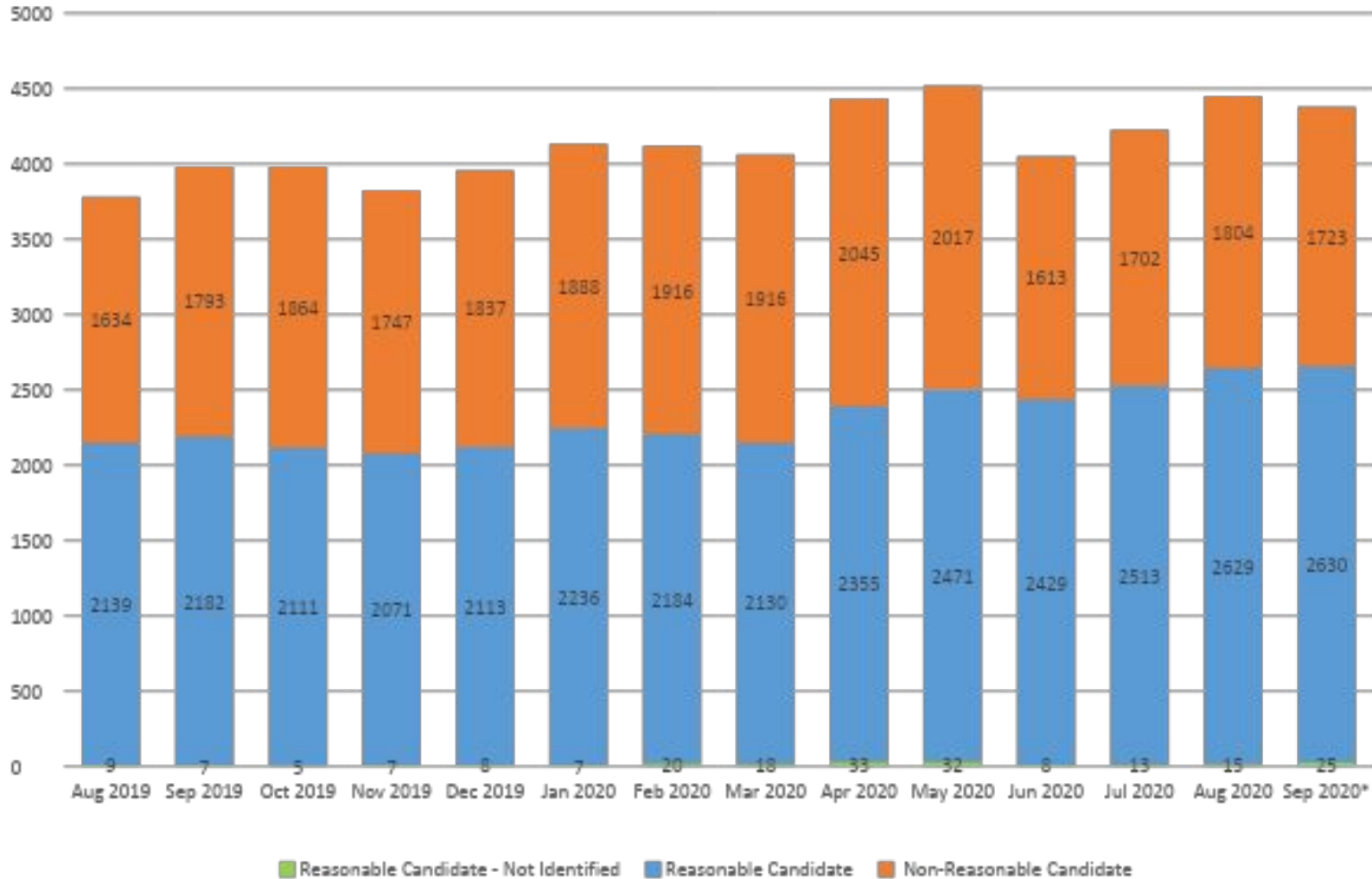
# Criminal Conduct Reports



NOTE: Reports include calls/reports that are no jurisdiction reports.  
 Data Source: DCS Tableau Dashboard, Criminal Conduct Reports, 10.31.2020

# Children Receiving In Home Services

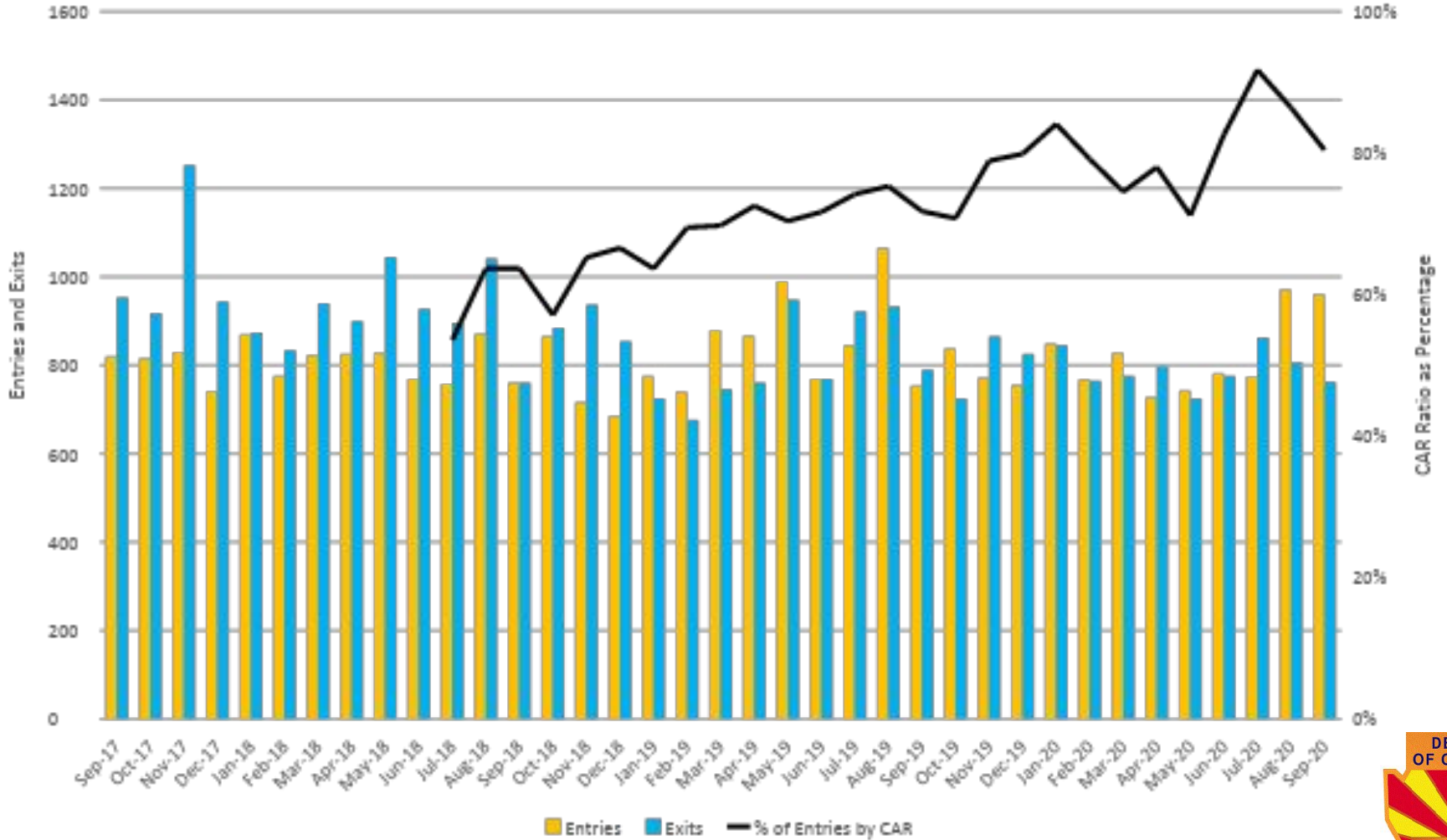
Children with Case Plan Goal – Remain with Family



NOTE: September 2020 data is preliminary

Data Source: DCS Monthly In-Home Care Report, 10.20.2020

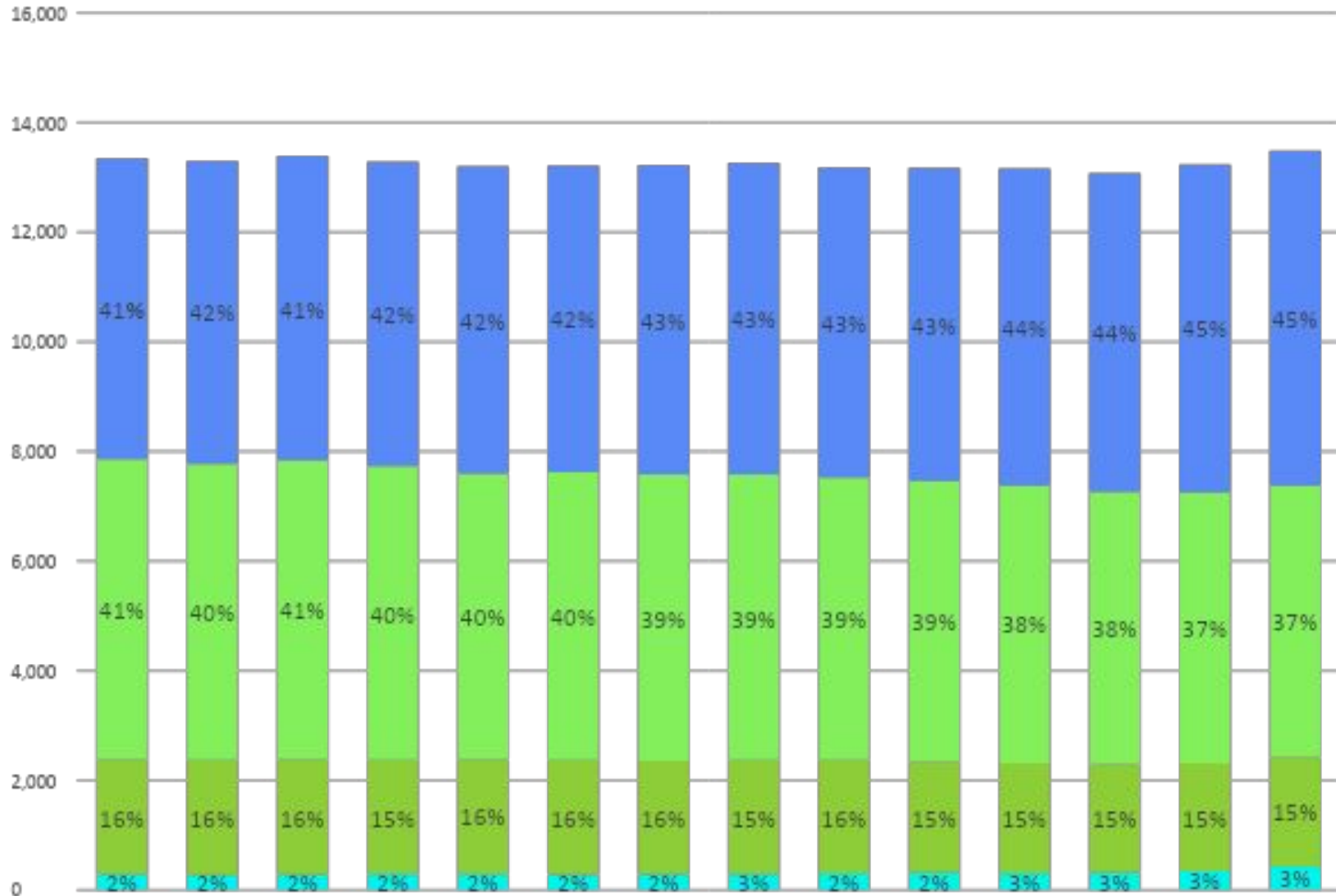
# Ratio of Approved CAR Petitions vs. Child Entries



NOTE: September 2020 data is preliminary  
 Data Source: CAR data received from Juvenile Courts, 10.5.2020; Entries and Exits Dashboard, 11.2.2020

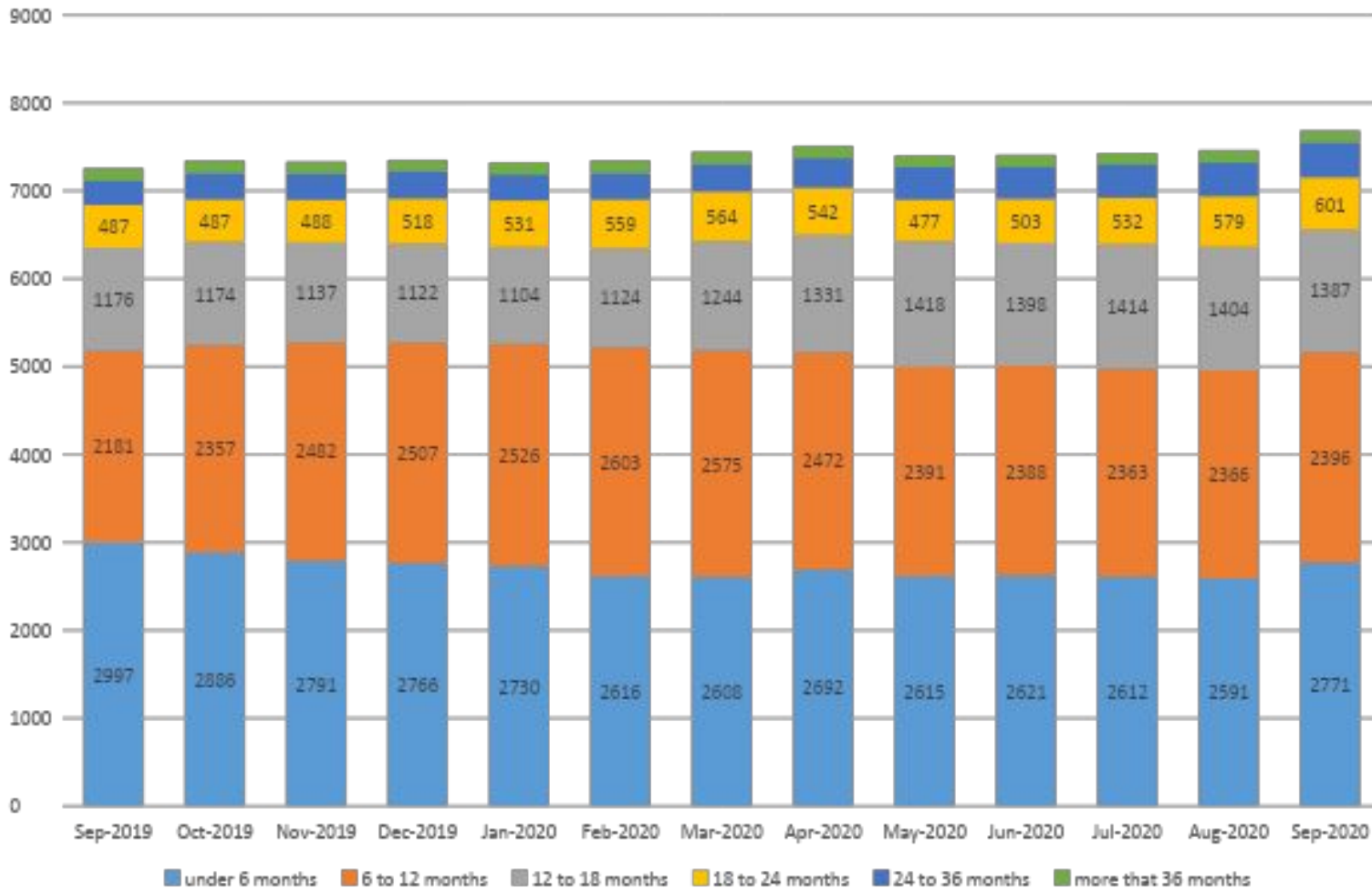


# Children in Out-of-Home Care (0-17 years old)



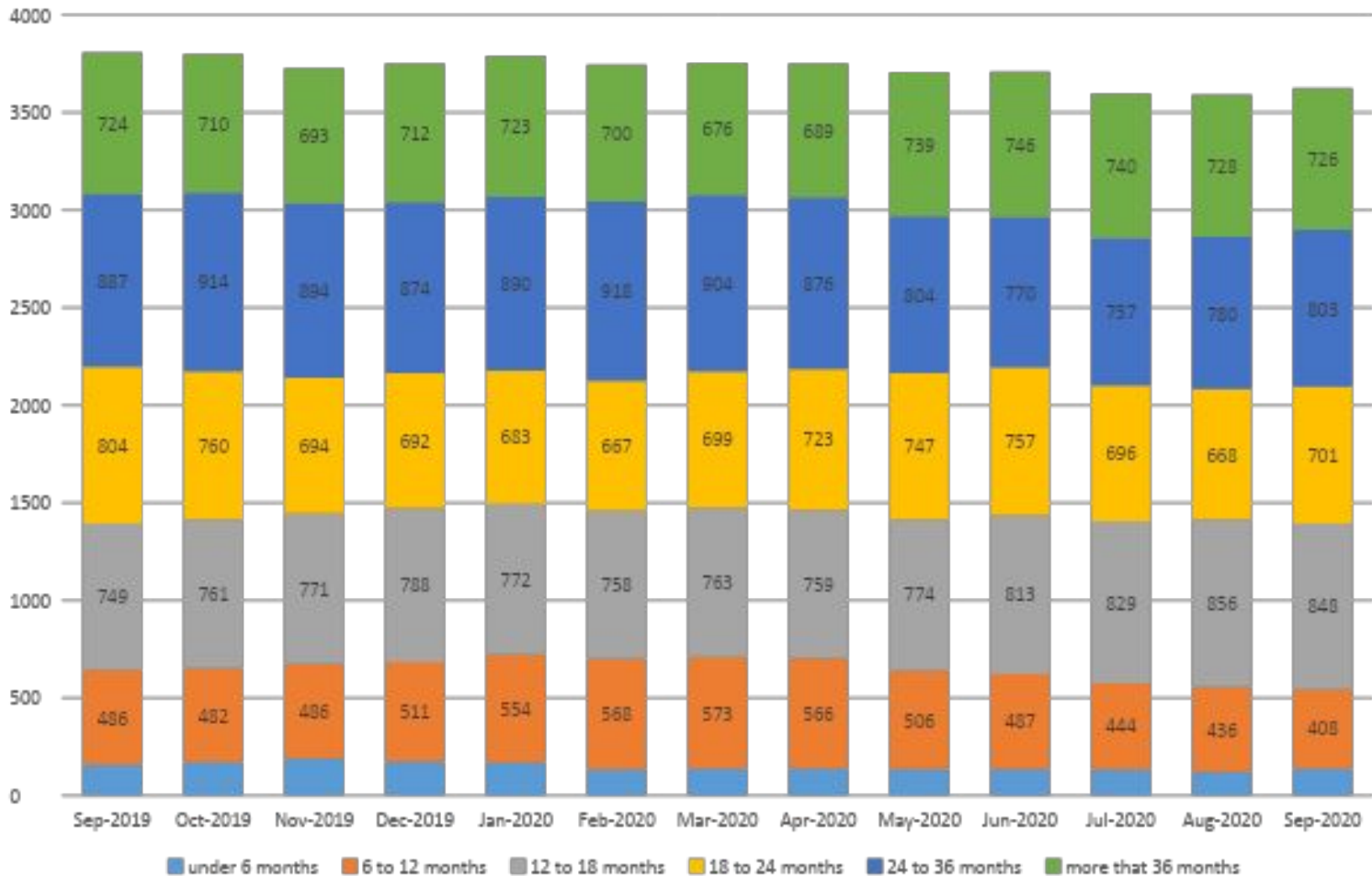
NOTE: September 2020 data is preliminary  
Data Source: DCS Monthly Out-of-Home Care Report, 10.20.2020

# Removed Children with Permanency Goal of Reunification by Length of Time in Care



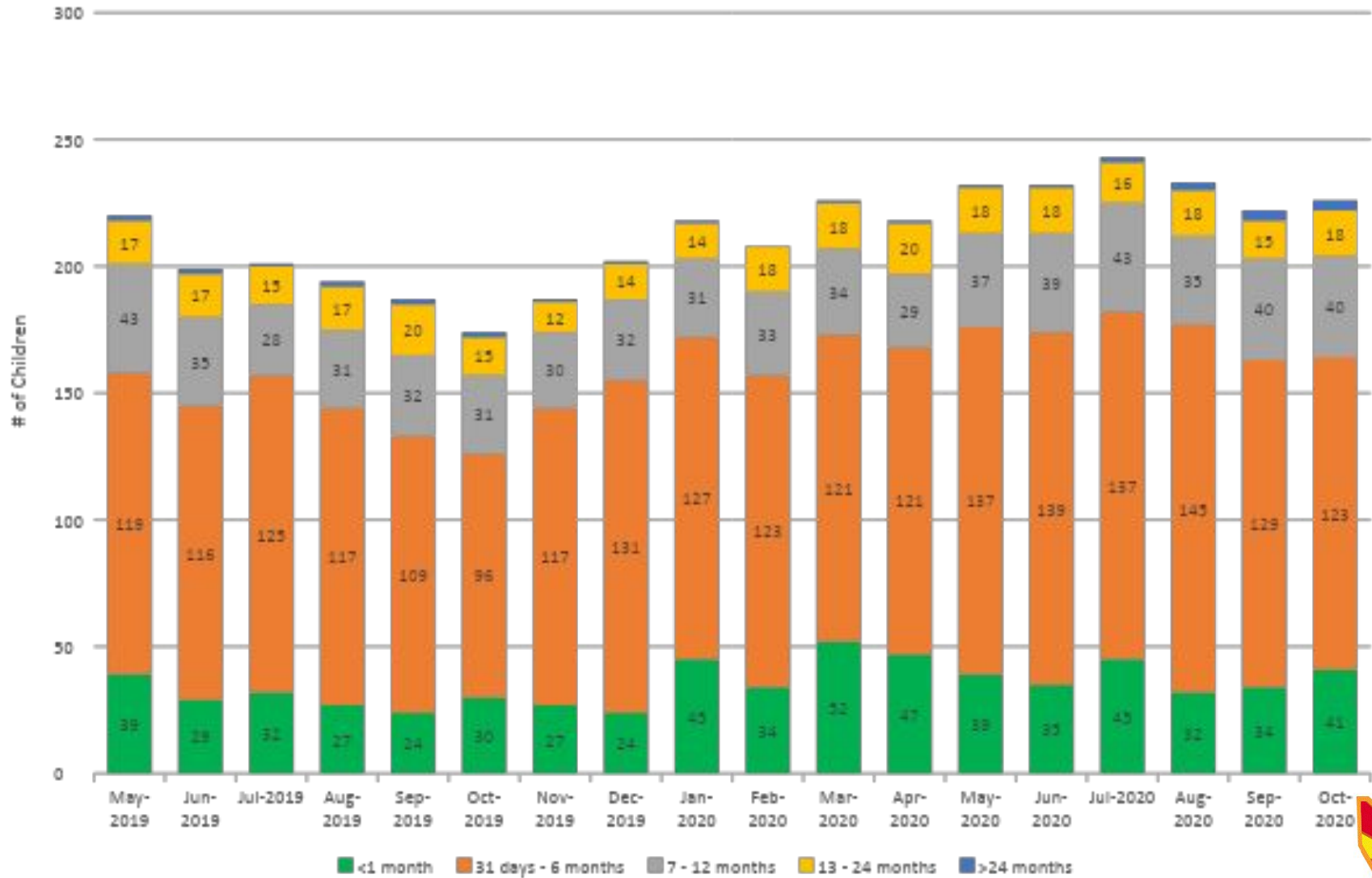
NOTE: September 2020 data is preliminary  
 Data Source: Einstein, 10.14.2020

# Removed Children with Permanency Goal of Adoption by Length of Time in Care



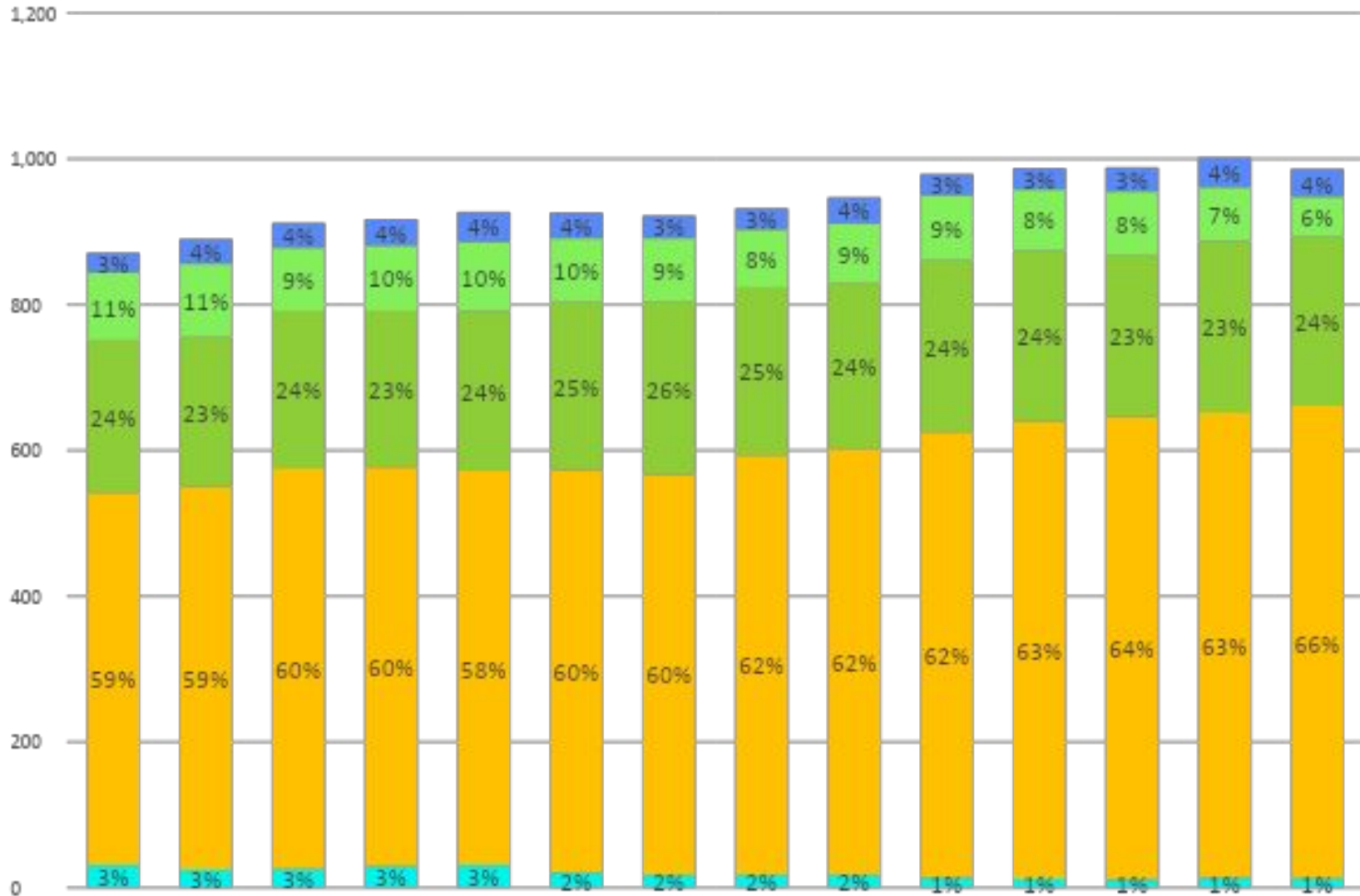
NOTE: September 2020 data is preliminary  
 Data Source: Einstein, 10.14.2020

# Runaway Youth



NOTE: October 2020 data is preliminary.  
Data Source: AMPM - OOH Statewide, 10.31.2020

# Children in Out-of-Home Care (18-21 years old)

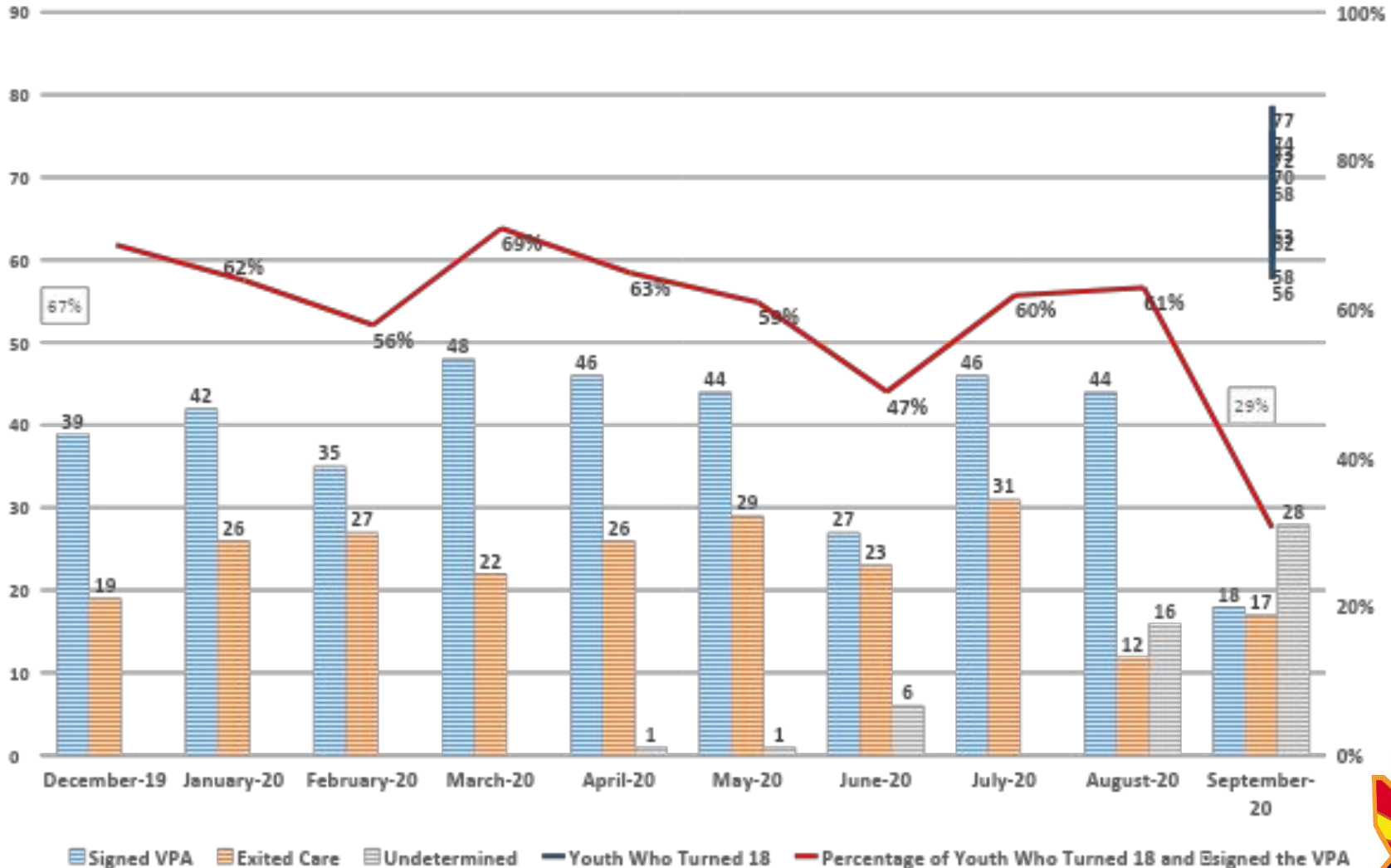


NOTE: September 2020 data is preliminary  
Data Source: DCS Monthly Out-of-Home Care Report, 10.20.2020



# Extended Foster Care

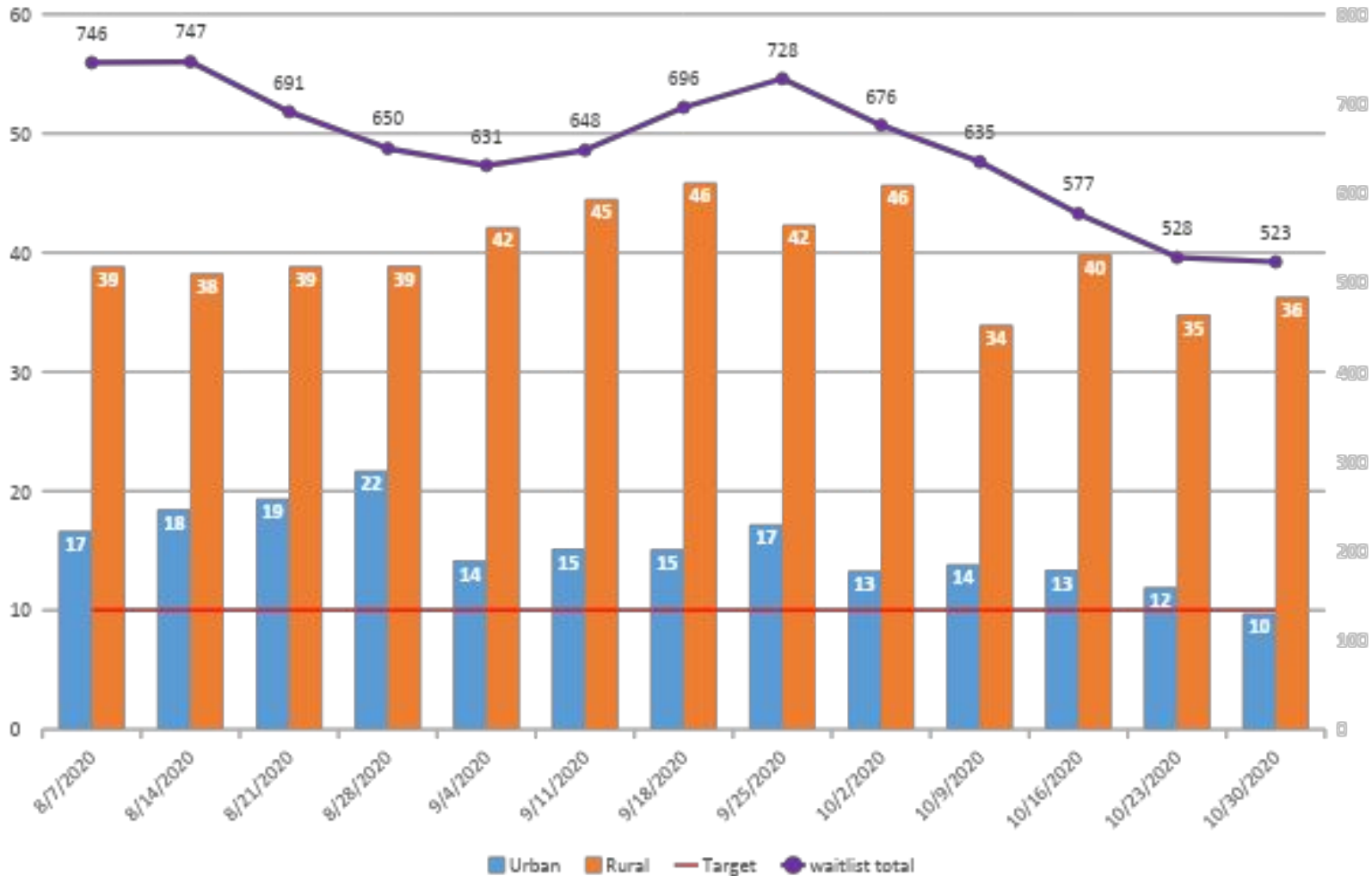
## Young Adults Turning 18 during the Month by Decision to Continue Services



NOTE: September 2020 data is preliminary  
 Data Source: Extended foster care unit, 10.13.2020

# Service Referral Waitlist

## Average Age of all referrals on Waitlist by County Type



Data Source: Weekly DCS Waitlist Report